

## Anti-OMG antibody

|                 |   |
|-----------------|---|
| <b>Cat. No.</b> | ml161986  |
| <b>Package</b>  | 25 µl/100 µl/200 µl                                     |
| <b>Storage</b>  | -20°C, pH7.4 PBS, 0.05% NaN <sub>3</sub> , 40% Glycerol |

### Product overview

|                     |                                     |
|---------------------|-------------------------------------|
| <b>Description</b>  | Anti-OMG rabbit polyclonal antibody |
| <b>Applications</b> | ELISA, WB, IHC                      |
| <b>Immunogen</b>    | Synthetic peptide of human OMG      |
| <b>Reactivity</b>   | Human, Mouse                        |
| <b>Content</b>      | 0.5 mg/ml                           |
| <b>Host species</b> | Rabbit                              |
| <b>Ig class</b>     | Immunogen-specific rabbit IgG       |
| <b>Purification</b> | Antigen affinity purification       |

### Target information

|                  |                                     |
|------------------|-------------------------------------|
| <b>Symbol</b>    | OMG                                 |
| <b>Full name</b> | oligodendrocyte myelin glycoprotein |
| <b>Synonyms</b>  | OMGP                                |
| <b>Swissprot</b> | P23515                              |

### Target Background

Oligodendrocyte myelin glycoprotein (OMG, OMgp) is a glycosylphosphatidylinositol-anchored protein expressed by neurons and oligodendrocytes that influences the development of the adult central nervous system (CNS). OMG inhibits neurite outgrowth through its interaction with the Nogo receptor. This function requires its leucine-rich repeat domain, a highly-conserved region in OMG that influences cell proliferation, formation and maintenance of myelin sheaths.

订购热线: 4008-898-798

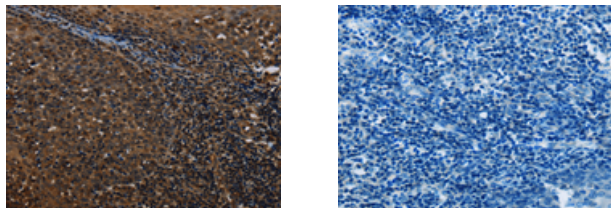
#### Applications

##### Immunohistochemistry

Predicted cell location: Nucleus or Cytoplasm

Positive control: Human tonsil

Recommended dilution: 50-200



The image on the left is immunohistochemistry of paraffin-embedded Human tonsil tissue using ml161986(OMG Antibody) at dilution 1/30, on the right is treated with synthetic peptide. (Original magnification:  $\times 200$ )

##### Western blotting

Predicted band size: 50 kDa

Positive control: Mouse brain tissue

Recommended dilution: 200-1000

Gel: 8%SDS-PAGE

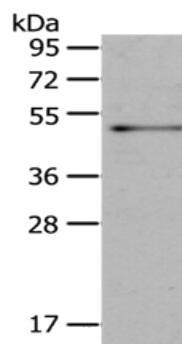
Lysate: 40  $\mu$ g

Lane: Mouse brain tissue

Primary antibody: ml161986(OMG Antibody) at dilution 1/200

Secondary antibody: Goat anti rabbit IgG at 1/8000 dilution

Exposure time: 20 seconds



##### ELISA

Recommended dilution: 1000-2000

联系电话: 4008-898-798, 021-61725725

联系QQ: 2881505695, 2881505696

邮箱: [mlbio\\_cn@yeah.net](mailto:mlbio_cn@yeah.net)

网址: [www.mlbio.cn](http://www.mlbio.cn)