

Anti-P2RX3 antibody

Cat. No.	ml161996
Package	25 µl/100 µl/200 µl
Storage	-20°C, pH7.4 PBS, 0.05% NaN ₃ , 40% Glycerol

Product overview

Description	Anti-P2RX3 rabbit polyclonal antibody
Applications	ELISA, WB, IHC
Immunogen	Synthetic peptide of human P2RX3
Reactivity	Human
Content	0.6 mg/ml
Host species	Rabbit
Ig class	Immunogen-specific rabbit IgG
Purification	Antigen affinity purification

Target information

Symbol	P2RX3
Full name	purinergic receptor P2X, ligand-gated ion channel, 3
Synonyms	P2X3
Swissprot	P56373

Target Background

The product of this gene belongs to the family of purinoceptors for ATP. This receptor functions as a ligand-gated ion channel and may transduce ATP-evoked nociceptor activation. Mouse studies suggest that this receptor is important for peripheral pain responses, and also participates in pathways controlling urinary bladder volume reflexes. It is possible that the development of selective antagonists for this receptor may have a therapeutic potential in pain relief and in the treatment of disorders of urine storage.

订购热线: 4008-898-798

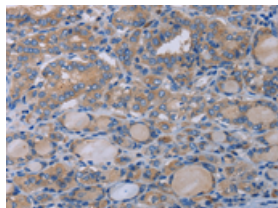
Applications

Immunohistochemistry

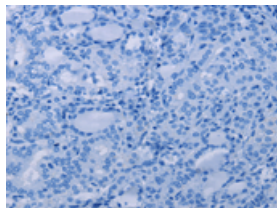
Predicted cell location: Cytoplasm

Positive control: Human thyroid cancer

Recommended dilution: 25-100



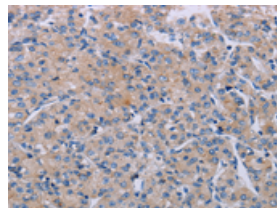
The image on the left is immunohistochemistry of paraffin-embedded Human thyroid cancer tissue using ml161996(P2RX3 Antibody) at dilution 1/50, on the right is treated with synthetic peptide. (Original magnification: $\times 200$)



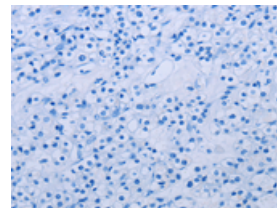
Predicted cell location: Cytoplasm

Positive control: Human prostate cancer

Recommended dilution: 25-100



The image on the left is immunohistochemistry of paraffin-embedded Human prostate cancer tissue using ml161996(P2RX3 Antibody) at dilution 1/50, on the right is treated with synthetic peptide. (Original magnification: $\times 200$)



Western blotting

Predicted band size: 44 kDa

Positive control: Human bladder and bladder transitional cells carcinoma tissue

Recommended dilution: 200-1000

Gel: 8%SDS-PAGE

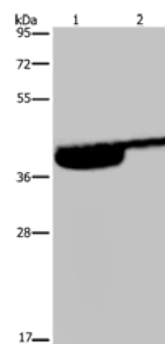
Lysate: 40 μ g

Lane 1-2: Human bladder tissue, Human bladder transitional cell carcinoma tissue

Primary antibody: ml161996(P2RX3 Antibody) at dilution 1/250

Secondary antibody: Goat anti rabbit IgG at 1/8000 dilution

Exposure time: 10 minutes



ELISA

Recommended dilution: 1000-2000

联系电话: 4008-898-798, 021-61725725

联系QQ: 2881505695, 2881505696

邮箱: mlbio_cn@yeah.net

网址: www.mlbio.cn