

Anti-GK5 antibody

Cat. No.	ml124839
Package	25 µl/100 µl/200 µl
Storage	-20°C, pH7.4 PBS, 0.05% NaN ₃ , 40% Glycerol

Product overview

Description	Anti-GK5 rabbit polyclonal antibody
Applications	ELISA, WB, IHC
Immunogen	Full length fusion protein
Reactivity	Human
Content	0.72 mg/ml
Host species	Rabbit
Ig class	Immunogen-specific rabbit IgG
Purification	Antigen affinity purification

Target information

Symbol	GK5
Full name	glycerol kinase 5 (putative)
Synonyms	
Swissprot	Q6ZS86

Target Background

GK5(Putative glycerol kinase 5) is also named as ATP:glycerol 3-phosphotransferase 5 and belongs to the FGGY kinase family. It is involved in Glycerol metabolism and catalyzes the phosphorylation of glycerol by ATP, yielding ADP and glycerol-3-phosphate. It has 3 isoforms produced by alternative splicing with the MW of 59 kDa, 34 kDa and 28 kDa.

订购热线: 4008-898-798

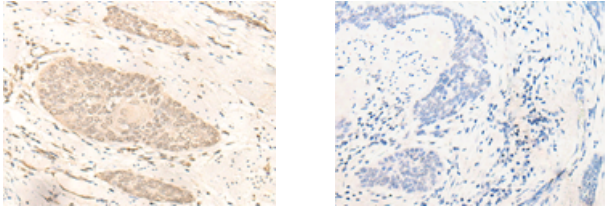
Applications

Immunohistochemistry

Predicted cell location: Cytoplasm and Nucleus

Positive control: Human esophagus cancer

Recommended dilution: 20-100



The image on the left is immunohistochemistry of paraffin-embedded Human esophagus cancer tissue using ml124839(GK5 Antibody) at dilution 1/20, on the right is treated with fusion protein. (Original magnification: $\times 200$)

Western blotting

Predicted band size: 59 kDa

Positive control: Human breast cancer tissue lysate

Recommended dilution: 200-1000

Gel: 8%SDS-PAGE

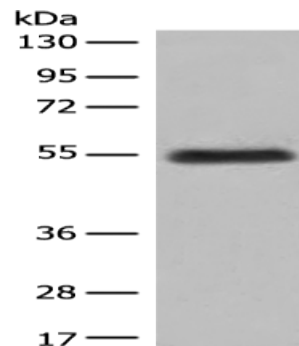
Lysate: 40 μ g

Lane: Human breast cancer tissue lysate

Primary antibody: ml124839(GK5 Antibody) at dilution 1/250

Secondary antibody: Goat anti rabbit IgG at 1/8000 dilution

Exposure time: 5 minutes



ELISA

Recommended dilution: 5000-10000

联系电话: 4008-898-798, 021-61725725

联系QQ: 2881505695, 2881505696

邮箱: mlbio_cn@yeah.net

网址: www.mlbio.cn