

## Anti-MRPL1 antibody

|                 |   |
|-----------------|---|
| <b>Cat. No.</b> | ml124843  |
| <b>Package</b>  | 25 µl/100 µl/200 µl                                     |
| <b>Storage</b>  | -20°C, pH7.4 PBS, 0.05% NaN <sub>3</sub> , 40% Glycerol |

### Product overview

|                     |                                       |
|---------------------|---------------------------------------|
| <b>Description</b>  | Anti-MRPL1 rabbit polyclonal antibody |
| <b>Applications</b> | ELISA, WB                             |
| <b>Immunogen</b>    | Fusion protein of human MRPL1         |
| <b>Reactivity</b>   | Human                                 |
| <b>Content</b>      | 0.6 mg/ml                             |
| <b>Host species</b> | Rabbit                                |
| <b>Ig class</b>     | Immunogen-specific rabbit IgG         |
| <b>Purification</b> | Antigen affinity purification         |

### Target information

|                  |                                    |
|------------------|------------------------------------|
| <b>Symbol</b>    | MRPL1                              |
| <b>Full name</b> | mitochondrial ribosomal protein L1 |
| <b>Synonyms</b>  | L1MT; BM022; MRP-L1                |
| <b>Swissprot</b> | Q9BYD6                             |

### Target Background

Mammalian mitochondrial ribosomal proteins are encoded by nuclear genes and help in protein synthesis within the mitochondrion. Mitochondrial ribosomes (mitoribosomes) consist of a small 28S subunit and a large 39S subunit. They have an estimated 75% protein to rRNA composition compared to prokaryotic ribosomes, where this ratio is reversed. Another difference between mammalian mitoribosomes and prokaryotic ribosomes is that the latter contain a 5S rRNA. Among different species, the proteins comprising the mitoribosome differ greatly in sequence, and sometimes in biochemical properties, which prevents easy recognition by sequence homology. This gene encodes a 39S subunit protein that belongs to the L1 ribosomal protein family.

订购热线: 4008-898-798

## Applications

### Western blotting

Predicted band size: 37 kDa

Positive control: Jurkat, 231, HEPG2 and K562 cell lysates

Recommended dilution: 200-1000

Gel: 8%SDS-PAGE

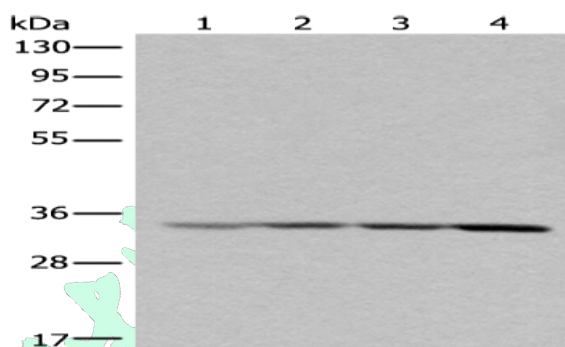
Lysate: 40 µg

Lane 1-4: Jurkat, 231, HEPG2 and K562 cell lysates

Primary antibody: ml124843(MRPL1 Antibody) at dilution 1/250

Secondary antibody: Goat anti rabbit IgG at 1/8000 dilution

Exposure time: 7 seconds



### ELISA

Recommended dilution: 5000-10000

联系电话: 4008-898-798, 021-61725725

联系QQ: 2881505695, 2881505696

邮箱: [mlbio\\_cn@yeah.net](mailto:mlbio_cn@yeah.net)

网址: [www.mlbio.cn](http://www.mlbio.cn)