

Anti-PGLYRP1 antibody

Cat. No.	ml162043
Package	25 µl/100 µl/200 µl
Storage	-20°C, pH7.4 PBS, 0.05% NaN ₃ , 40% Glycerol

Product overview

Description	Anti-PGLYRP1 rabbit polyclonal antibody
Applications	ELISA, WB
Immunogen	Synthetic peptide of human PGLYRP1
Reactivity	Human, Mouse, Rat
Content	0.4 mg/ml
Host species	Rabbit
Ig class	Immunogen-specific rabbit IgG
Purification	Antigen affinity purification

Target information

Symbol	PGLYRP1
Full name	peptidoglycan recognition protein 1
Synonyms	PGRP; TAG7; PGRPS; PGLYRP; PGRP-S; TNFSF3L
Swissprot	O75594

Target Background

Peptidoglycan recognition proteins (PGRPs) are molecules that recognize peptidoglycan, a large component in bacterial cell walls. In insects, PGRPs activate antimicrobial pathways, and in mammals PGRPs function as antibacterial neutrophil proteins. PGRP-L halts bacterial growth by acting as an alanine amidase, an enzyme that hydrolyzes the amide bond of bacterial peptidoglycan. PGRP-I α and PGRP-I β are also members of the PGRP family that help recognize bacteria by binding to peptidoglycan and Gram-positive bacteria, but they do not have amidase activity. PGRP-S participates in intracellular killing of Gram-positive bacteria by stimulating two antimicrobial defense systems, the prophenoloxidase cascade and the antimicrobial peptides through Toll receptors.

订购热线: 4008-898-798

Applications

Western blotting

Predicted band size: 22 kDa

Positive control: HeLa and K562 cells, human fetal liver tissue

Recommended dilution: 200-1000

Gel: 8% SDS-PAGE

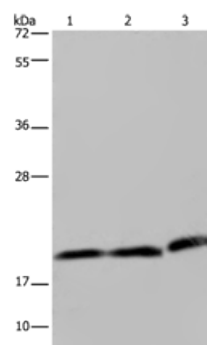
Lysate: 40 µg

Lane 1-3: HeLa cells, K562 cells, human fetal liver tissue

Primary antibody: ml162043 (PGLYRP1 Antibody) at dilution 1/200

Secondary antibody: Goat anti rabbit IgG at 1/8000 dilution

Exposure time: 2 minutes



ELISA

Recommended dilution: 1000-2000

联系电话: 4008-898-798, 021-61725725

联系QQ: 2881505695, 2881505696

邮箱: mlbio_cn@yeah.net

网址: www.mlbio.cn