

Anti-PTGER1 antibody

Cat. No.	ml162087
Package	25 µl/100 µl/200 µl
Storage	-20°C, pH7.4 PBS, 0.05% NaN ₃ , 40% Glycerol

Product overview

Description	Anti-PTGER1 rabbit polyclonal antibody
Applications	ELISA, WB
Immunogen	Synthetic peptide of human PTGER1
Reactivity	Human, Mouse, Rat
Content	0.5 mg/ml
Host species	Rabbit
Ig class	Immunogen-specific rabbit IgG
Purification	Antigen affinity purification

Target information

Symbol	PTGER1
Full name	prostaglandin E receptor 1 (subtype EP1), 42kDa
Synonyms	EP1
Swissprot	P34995

Target Background

The protein encoded by this gene is a member of the G protein-coupled receptor family. This protein is one of four receptors identified for prostaglandin E₂ (PGE₂). Through a phosphatidylinositol-calcium second messenger system, G-Q proteins mediate this receptor's activity. Knockout studies in mice suggested a role of this receptor in mediating algnesia and in regulation of blood pressure. Studies in mice also suggested that this gene may mediate adrenocorticotrophic hormone response to bacterial endotoxin.

订购热线: 4008-898-798

Applications

Western blotting

Predicted band size: 42 kDa

Positive control: 293T, A549, hela and PC3 cells

Recommended dilution: 500-2000

Gel: 10% SDS-PAGE

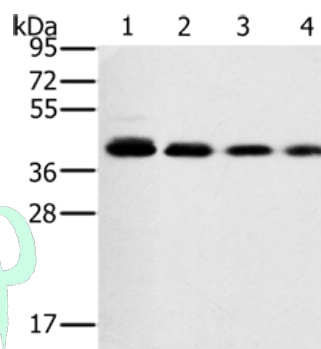
Lysate: 40 µg

Lane 1-4: 293T cells, A549 cells, hela cells, PC3 cells

Primary antibody: ml162087 (PTGER1 Antibody) at dilution 1/200

Secondary antibody: Goat anti rabbit IgG at 1/8000 dilution

Exposure time: 10 seconds



ELISA

Recommended dilution: 2000-5000

联系电话: 4008-898-798, 021-61725725

联系QQ: 2881505695, 2881505696

邮箱: mlbio_cn@yeah.net

网址: www.mlbio.cn