

Anti-PTPN12 antibody

Cat. No.	ml162089
Package	25 µl/100 µl/200 µl
Storage	-20°C, pH7.4 PBS, 0.05% NaN ₃ , 40% Glycerol

Product overview

Description	Anti-PTPN12 rabbit polyclonal antibody
Applications	ELISA, WB, IHC
Immunogen	Synthetic peptide of human PTPN12
Reactivity	Human, Mouse
Content	1 mg/ml
Host species	Rabbit
Ig class	Immunogen-specific rabbit IgG
Purification	Antigen affinity purification

Target information

Symbol	PTPN12
Full name	protein tyrosine phosphatase, non-receptor type 12
Synonyms	PTPG1; PTP-PEST
Swissprot	Q05209

Target Background

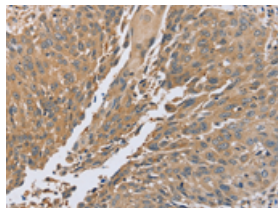
The protein encoded by this gene is a member of the protein tyrosine phosphatase (PTP) family. PTPs are signaling molecules that regulate a variety of cellular processes including cell growth, differentiation, mitotic cycle, and oncogenic transformation. This PTP contains a C-terminal PEST motif, which serves as a protein-protein interaction domain, and may regulate protein intracellular half-life. This PTP was found to bind and dephosphorylate the product of the oncogene c-ABL and thus may play a role in oncogenesis.

订购热线: 4008-898-798

Applications

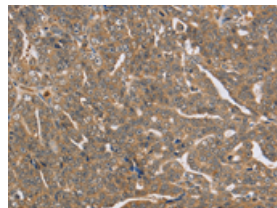
Immunohistochemistry

Predicted cell location: Cytoplasm
Positive control: Human lung cancer
Recommended dilution: 100-300



The image on the left is immunohistochemistry of paraffin-embedded Human lung cancer tissue using ml162089(PTPN12 Antibody) at dilution 1/45, on the right is treated with synthetic peptide. (Original magnification: $\times 200$)

Predicted cell location: Cytoplasm
Positive control: Human cervical cancer
Recommended dilution: 100-300



The image on the left is immunohistochemistry of paraffin-embedded Human cervical cancer tissue using ml162089(PTPN12 Antibody) at dilution 1/45, on the right is treated with synthetic peptide. (Original magnification: $\times 200$)

Western blotting

Predicted band size: 88 kDa
Positive control: 231 and K562 cells
Recommended dilution: 200-1000

Gel: 6%SDS-PAGE

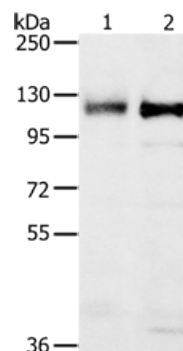
Lysate: 40 μ g

Lane 1-2: 231 cells, K562 cells

Primary antibody: ml162089(PTPN12 Antibody) at dilution 1/200

Secondary antibody: Goat anti rabbit IgG at 1/8000 dilution

Exposure time: 10 minutes



ELISA

Recommended dilution: 1000-2000

联系电话: 4008-898-798, 021-61725725

联系QQ: 2881505695, 2881505696

邮箱: mlbio_cn@yeah.net

网址: www.mlbio.cn