

Anti-SLAMF8 antibody

Cat. No.	ml121988
Package	25 µl/100 µl/200 µl
Storage	-20°C, pH7.4 PBS, 0.05% NaN ₃ , 40% Glycerol

Product overview

Description	Anti-SLAMF8 rabbit polyclonal antibody
Applications	ELISA, IHC
Immunogen	Fusion protein of human SLAMF8
Reactivity	Human
Content	0.6 mg/ml
Host species	Rabbit
Ig class	Immunogen-specific rabbit IgG
Purification	Antigen affinity purification

Target information

Symbol	SLAMF8
Full name	SLAM family member 8p
Synonyms	BLAME; CD353; SBB142
Swissprot	Q9P0V8

Target Background

This gene encodes a member of the CD2 family of cell surface proteins involved in lymphocyte activation. These proteins are characterized by Ig domains. This protein is expressed in lymphoid tissues, and studies of a similar protein in mouse suggest that it may function during B cell lineage commitment. The gene is found in a region of chromosome 1 containing many CD2 genes.

订购热线: 4008-898-798

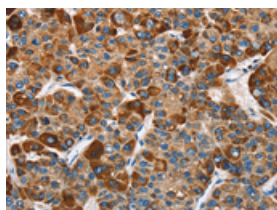
Applications

Immunohistochemistry

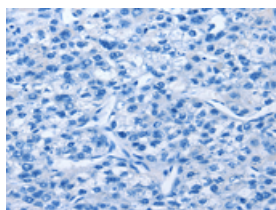
Predicted cell location: Cytoplasm

Positive control: Human liver cancer

Recommended dilution: 50-200



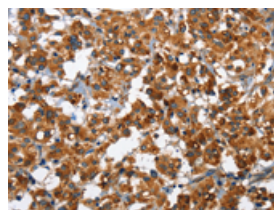
The image on the left is immunohistochemistry of paraffin-embedded Human liver cancer tissue using ml121988(SLAMF8 Antibody) at dilution 1/40, on the right is treated with fusion protein. (Original magnification: $\times 200$)



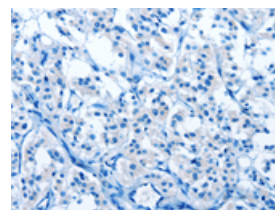
Predicted cell location: Cytoplasm

Positive control: Human thyroid cancer

Recommended dilution: 50-200



The image on the left is immunohistochemistry of paraffin-embedded Human thyroid cancer tissue using ml121988(SLAMF8 Antibody) at dilution 1/40, on the right is treated with fusion protein. (Original magnification: $\times 200$)



ELISA

Recommended dilution: 1000-5000

联系电话: 4008-898-798, 021-61725725

联系QQ: 2881505695, 2881505696

邮箱: mlbio_cn@yeah.net

网址: www.mlbio.cn