

## Anti-HIF1A antibody

<b>Cat. No.</b>	ml162108
<b>Package</b>	25 µl/100 µl/200 µl
<b>Storage</b>	-20°C, pH7.4 PBS, 0.05% NaN <sub>3</sub> , 40% Glycerol

### Product overview

<b>Description</b>	Anti-HIF1A rabbit polyclonal antibody
<b>Applications</b>	ELISA, WB
<b>Immunogen</b>	Synthetic peptide of human HIF1A
<b>Reactivity</b>	Human, Mouse, Rat
<b>Content</b>	0.2 mg/ml
<b>Host species</b>	Rabbit
<b>Ig class</b>	Immunogen-specific rabbit IgG
<b>Purification</b>	Antigen affinity purification

### Target information

<b>Symbol</b>	HIF1A
<b>Full name</b>	hypoxia inducible factor 1, alpha subunit (basic helix-loop-helix transcription factor)
<b>Synonyms</b>	HIF1; MOP1; PASD8; HIF-1A; bHLHe78; HIF-1alpha; HIF1-ALPHA
<b>Swissprot</b>	Q16665

### Target Background

This gene encodes the alpha subunit of transcription factor hypoxia-inducible factor-1 (HIF-1), which is a heterodimer composed of an alpha and a beta subunit. HIF-1 functions as a master regulator of cellular and systemic homeostatic response to hypoxia by activating transcription of many genes, including those involved in energy metabolism, angiogenesis, apoptosis, and other genes whose protein products increase oxygen delivery or facilitate metabolic adaptation to hypoxia. HIF-1 thus plays an essential role in embryonic vascularization, tumor angiogenesis and pathophysiology of ischemic disease.

订购热线: 4008-898-798

#### Applications

##### Western blotting

Predicted band size: 93 kDa

Positive control: Hela cells untreated and treated with cobalt chloride (0.1 mM for 4 hours)

Recommended dilution: 500-2000

Gel: 8% SDS-PAGE

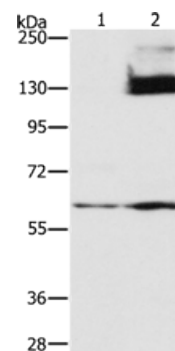
Lysate: 40 µg

Lane 1-2: Hela cells untreated with cobalt chloride, Hela cells treated with cobalt chloride (0.1 mM for 4 hours)

Primary antibody: ml162108 (HIF1A Antibody) at dilution 1/400

Secondary antibody: Goat anti rabbit IgG at 1/8000 dilution

Exposure time: 2 minutes



##### ELISA

Recommended dilution: 2000-5000

联系电话: 4008-898-798, 021-61725725

联系QQ: 2881505695, 2881505696

邮箱: [mlbio\\_cn@yeah.net](mailto:mlbio_cn@yeah.net)

网址: [www.mlbio.cn](http://www.mlbio.cn)