

Anti-RBM38 antibody

Cat. No.	ml162114
Package	25 µl/100 µl/200 µl
Storage	-20°C, pH7.4 PBS, 0.05% NaN ₃ , 40% Glycerol

Product overview

Description	Anti-RBM38 rabbit polyclonal antibody
Applications	ELISA, WB, IHC
Immunogen	Synthetic peptide of human RBM38
Reactivity	Human, Mouse
Content	0.5 mg/ml
Host species	Rabbit
Ig class	Immunogen-specific rabbit IgG
Purification	Antigen affinity purification

Target information

Symbol	RBM38
Full name	RNA binding motif protein 38
Synonyms	RNPC1; SEB4B; SEB4D; HSRNASEB; dJ800J21.2
Swissprot	Q9H0Z9

Target Background

RBM38 (RNA-binding protein 38), also known as RNPC1 or SEB4. RBM38 is a cell cycle protein found in the cytosol and the Nucleus that exists as two alternatively spliced isoforms, 1 (RNPC1a) and 2 (RNPC1b), of 239 and 121 amino acids, respectively. Independent of p53 expression, RBM38 isoform 1 induces cell cycle arrest in G1 phase through maintaining transcript stability at the 3'-UTR of p21, a regulator of cell cycle progression at S phase. RBM38 is also an mRNA splicing factor that regulates the expression of FGFR2. RBM38 contains one RRM (RNA recognition motif) domain.

订购热线: 4008-898-798

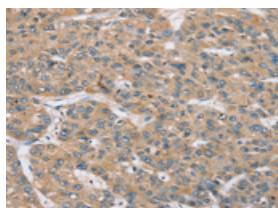
Applications

Immunohistochemistry

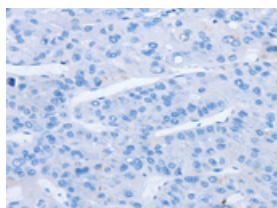
Predicted cell location: Cytoplasm

Positive control: Human liver cancer

Recommended dilution: 25-100



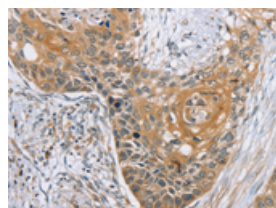
The image on the left is immunohistochemistry of paraffin-embedded Human liver cancer tissue using ml162114(RBM38 Antibody) at dilution 1/35, on the right is treated with synthetic peptide. (Original magnification: $\times 200$)



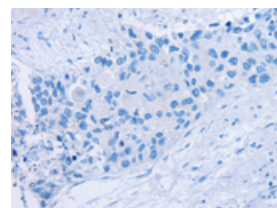
Predicted cell location: Cytoplasm

Positive control: Human esophagus cancer

Recommended dilution: 25-100



The image on the left is immunohistochemistry of paraffin-embedded Human esophagus cancer tissue using ml162114(RBM38 Antibody) at dilution 1/35, on the right is treated with synthetic peptide. (Original magnification: $\times 200$)



Western blotting

Predicted band size: 25 kDa

Positive control: Mouse heart tissue

Recommended dilution: 200-1000

Gel: 10% SDS-PAGE

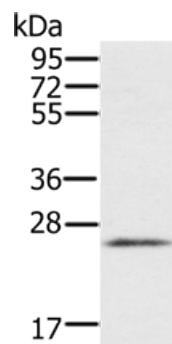
Lysate: 40 μ g

Lane: Mouse heart tissue

Primary antibody: ml162114(RBM38 Antibody) at dilution 1/200

Secondary antibody: Goat anti rabbit IgG at 1/8000 dilution

Exposure time: 1 minute



ELISA

Recommended dilution: 1000-2000

联系电话: 4008-898-798, 021-61725725

联系QQ: 2881505695, 2881505696

邮箱: mlbio_cn@yeah.net

网址: www.mlbio.cn