

## Anti-RCC1 antibody

<b>Cat. No.</b>	ml162116
<b>Package</b>	25 µl/100 µl/200 µl
<b>Storage</b>	-20°C, pH7.4 PBS, 0.05% NaN <sub>3</sub> , 40% Glycerol

### Product overview

<b>Description</b>	Anti-RCC1 rabbit polyclonal antibody
<b>Applications</b>	ELISA, WB
<b>Immunogen</b>	Synthetic peptide of human RCC1
<b>Reactivity</b>	Human, Mouse
<b>Content</b>	0.3 mg/ml
<b>Host species</b>	Rabbit
<b>Ig class</b>	Immunogen-specific rabbit IgG
<b>Purification</b>	Antigen affinity purification

### Target information

<b>Symbol</b>	RCC1
<b>Full name</b>	regulator of chromosome condensation 1
<b>Synonyms</b>	CHC1; RCC1-I; SNHG3-RCC1
<b>Swissprot</b>	P18754

### Target Background

RCC1 (regulator of chromosome condensation 1), increases the rate at which Ran exchanges GDP for GTP. Ran GAP1 opposes the effects of RCC1 by increasing the rate at which Ran hydrolyzes GTP to GDP. A protein designated Ran BP1 has no intrinsic GAP activity and functions as a GEF inhibitor, deactivating RCC1 and thereby indirectly increasing the ratio of Ran GDP to Ran GTP. Ran BP2 has been proposed as the Ran GTP docking site at the periphery of the nuclear pore complex.

订购热线: 4008-898-798

#### Applications

##### Western blotting

Predicted band size: 45 kDa

Positive control: HepG2 cells

Recommended dilution: 200-1000

Gel: 6%SDS-PAGE

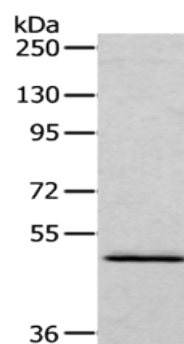
Lysate: 40 µg

Lane: HepG2 cells

Primary antibody: ml162116(RCC1 Antibody) at dilution 1/200

Secondary antibody: Goat anti rabbit IgG at 1/8000 dilution

Exposure time: 2 minutes



##### ELISA

Recommended dilution: 1000-2000

联系电话: 4008-898-798, 021-61725725

联系QQ: 2881505695, 2881505696

邮箱: [mlbio\\_cn@yeah.net](mailto:mlbio_cn@yeah.net)

网址: [www.mlbio.cn](http://www.mlbio.cn)