

## Anti-RNLS antibody

|                 |   |
|-----------------|---|
| <b>Cat. No.</b> | ml162122  |
| <b>Package</b>  | 25 µl/100 µl/200 µl                                     |
| <b>Storage</b>  | -20°C, pH7.4 PBS, 0.05% NaN <sub>3</sub> , 40% Glycerol |

### Product overview

|                     |                                      |
|---------------------|--------------------------------------|
| <b>Description</b>  | Anti-RNLS rabbit polyclonal antibody |
| <b>Applications</b> | ELISA, WB                            |
| <b>Immunogen</b>    | Synthetic peptide of human RNLS      |
| <b>Reactivity</b>   | Human, Mouse, Rat                    |
| <b>Content</b>      | 0.5 mg/ml                            |
| <b>Host species</b> | Rabbit                               |
| <b>Ig class</b>     | Immunogen-specific rabbit IgG        |
| <b>Purification</b> | Antigen affinity purification        |

### Target information

|                  |                                       |
|------------------|---------------------------------------|
| <b>Symbol</b>    | RNLS                                  |
| <b>Full name</b> | renalase, FAD-dependent amine oxidase |
| <b>Synonyms</b>  | C10orf59; RENALASE                    |
| <b>Swissprot</b> | Q5VYX0                                |

### Target Background

Renalase is a flavin adenine dinucleotide-dependent amine oxidase that is secreted into the blood from the kidney. Catalyzes the oxidation of the less abundant alpha-NAD(P)H isoform to form beta-NAD(P)<sup>+</sup>. The enzyme hormone is secreted by the kidney, and circulates in blood and modulates cardiac function and systemic blood pressure. Lowers blood pressure in vivo by decreasing cardiac contractility and heart rate and preventing a compensatory increase in peripheral vascular tone, suggesting a causal link to the increased plasma catecholamine and heightened cardiovascular risk.

订购热线: 4008-898-798

#### Applications

##### Western blotting

Predicted band size: 38 kDa

Positive control: 293T and K562 cells

Recommended dilution: 500-2000

Gel: 10% SDS-PAGE

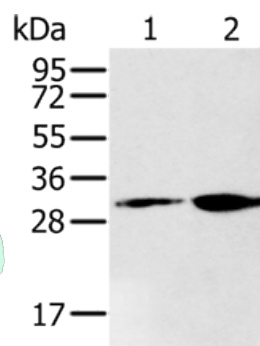
Lysate: 40 µg

Lane 1-2: 293T cells, K562 cells

Primary antibody: ml162122(RNLS Antibody) at dilution 1/200

Secondary antibody: Goat anti rabbit IgG at 1/8000 dilution

Exposure time: 1 minute



##### ELISA

Recommended dilution: 2000-5000

联系电话: 4008-898-798, 021-61725725

联系QQ: 2881505695, 2881505696

邮箱: [mlbio\\_cn@yeah.net](mailto:mlbio_cn@yeah.net)

网址: [www.mlbio.cn](http://www.mlbio.cn)