

Anti-OLA1 antibody

Cat. No.	ml124934
Package	25 µl/100 µl/200 µl
Storage	-20°C, pH7.4 PBS, 0.05% NaN ₃ , 40% Glycerol

Product overview

Description	Anti-OLA1 rabbit polyclonal antibody
Applications	ELISA, WB, IHC
Immunogen	Fusion protein of human OLA1
Reactivity	Human, Mouse, Rat
Content	0.84 mg/ml
Host species	Rabbit
Ig class	Immunogen-specific rabbit IgG
Purification	Antigen affinity purification

Target information

Symbol	OLA1
Full name	Obg like ATPase 1
Synonyms	DOC45; GBP45; GTBP9; GTPBP9; PTD004
Swissprot	Q9NTK5

Target Background

This gene encodes a member of the GTPase protein family. The encoded protein interacts with breast cancer-associated gene 1 (BRCA1) and BRCA1-associated RING domain protein (BARD1), and is involved in centrosome regulation. Overexpression of this gene has been observed in multiple types of cancer and may be associated with poor survival. Pseudogenes of this gene have been defined on chromosomes 17 and 22.

订购热线: 4008-898-798

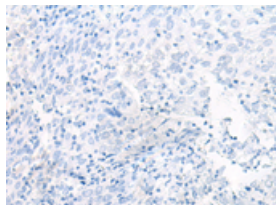
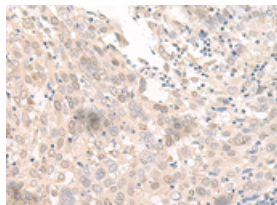
Applications

Immunohistochemistry

Predicted cell location: Cytoplasm and Nucleus

Positive control: Human prostate cancer

Recommended dilution: 40-200

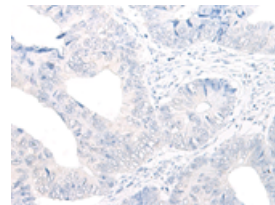
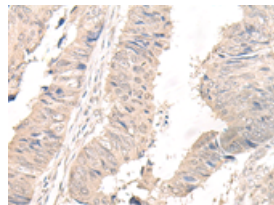


The image on the left is immunohistochemistry of paraffin-embedded Human prostate cancer tissue using ml124934(OLA1 Antibody) at dilution 1/45, on the right is treated with fusion protein. (Original magnification: $\times 200$)

Predicted cell location: Cytoplasm and Nucleus

Positive control: Human lung cancer

Recommended dilution: 40-200



The image on the left is immunohistochemistry of paraffin-embedded Human lung cancer tissue using ml124934(OLA1 Antibody) at dilution 1/45, on the right is treated with fusion protein. (Original magnification: $\times 200$)

Western blotting

Predicted band size: 45 kDa

Positive control: A375 cell lysate

Recommended dilution: 500-2000

Gel: 8%SDS-PAGE

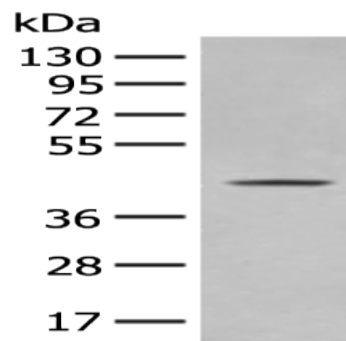
Lysate: 40 μ g

Lane: A375 cell lysate

Primary antibody: ml124934(OLA1 Antibody) at dilution 1/400

Secondary antibody: Goat anti rabbit IgG at 1/8000 dilution

Exposure time: 1 minute



ELISA

Recommended dilution: 5000-10000

联系电话: 4008-898-798, 021-61725725

联系QQ: 2881505695, 2881505696

邮箱: mlbio_cn@yeah.net

网址: www.mlbio.cn