

Anti-ZBTB8A antibody

Cat. No.	ml124987
Package	25 µl/100 µl/200 µl
Storage	-20°C, pH7.4 PBS, 0.05% NaN ₃ , 40% Glycerol

Product overview

Description	Anti-ZBTB8A rabbit polyclonal antibody
Applications	ELISA, WB, IHC
Immunogen	Fusion protein of human ZBTB8A
Reactivity	Human, Mouse, Rat
Content	0.6 mg/ml
Host species	Rabbit
Ig class	Immunogen-specific rabbit IgG
Purification	Antigen affinity purification

Target information

Symbol	ZBTB8A
Full name	zinc finger and BTB domain containing 8A
Synonyms	BOZF1; ZBTB8; ZNF916A
Swissprot	Q96BR9

Target Background

May be involved in transcriptional regulation.

订购热线: 4008-898-798

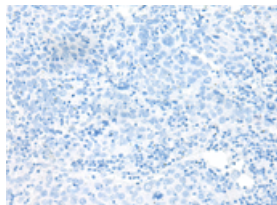
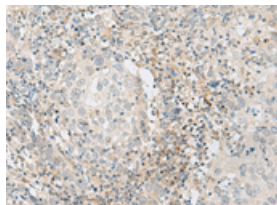
Applications

Immunohistochemistry

Predicted cell location: Cytoplasm or Nucleus

Positive control: Human cervical cancer

Recommended dilution: 50-300

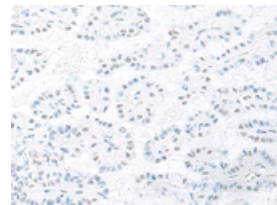
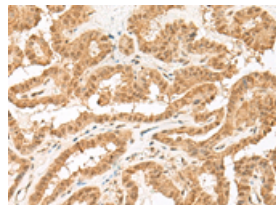


The image on the left is immunohistochemistry of paraffin-embedded Human cervical cancer tissue using ml124987(ZBTB8A Antibody) at dilution 1/70, on the right is treated with fusion protein. (Original magnification: $\times 200$)

Predicted cell location: Cytoplasm or Nucleus

Positive control: Human thyroid cancer

Recommended dilution: 50-300



The image on the left is immunohistochemistry of paraffin-embedded Human thyroid cancer tissue using ml124987(ZBTB8A Antibody) at dilution 1/70, on the right is treated with fusion protein. (Original magnification: $\times 200$)

Western blotting

Predicted band size: 50 kDa

Positive control: 293T cell lysate

Recommended dilution: 500-2000

Gel: 8%SDS-PAGE

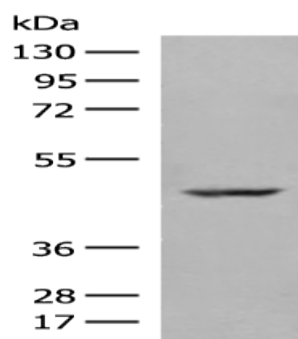
Lysate: 40 μ g

Lane: 293T cell lysate

Primary antibody: ml124987(ZBTB8A Antibody) at dilution 1/250

Secondary antibody: Goat anti rabbit IgG at 1/8000 dilution

Exposure time: 10 seconds



ELISA

Recommended dilution: 5000-10000

联系电话: 4008-898-798, 021-61725725

联系QQ: 2881505695, 2881505696

邮箱: mlbio_cn@yeah.net

网址: www.mlbio.cn