

## Anti-RRAS antibody

|                 |   |
|-----------------|---|
| <b>Cat. No.</b> | ml162143  |
| <b>Package</b>  | 25 µl/100 µl/200 µl                                     |
| <b>Storage</b>  | -20°C, pH7.4 PBS, 0.05% NaN <sub>3</sub> , 40% Glycerol |

### Product overview

|                     |                                      |
|---------------------|--------------------------------------|
| <b>Description</b>  | Anti-RRAS rabbit polyclonal antibody |
| <b>Applications</b> | ELISA, WB, IHC                       |
| <b>Immunogen</b>    | Synthetic peptide of human RRAS      |
| <b>Reactivity</b>   | Human, Mouse, Rat                    |
| <b>Content</b>      | 0.4 mg/ml                            |
| <b>Host species</b> | Rabbit                               |
| <b>Ig class</b>     | Immunogen-specific rabbit IgG        |
| <b>Purification</b> | Antigen affinity purification        |

### Target information

|                  |  |
|------------------|--|
| <b>Symbol</b>    | RRAS                                       |
| <b>Full name</b> | related RAS viral (r-ras) oncogene homolog |
| <b>Synonyms</b>  |  |
| <b>Swissprot</b> | P10301                                     |

### Target Background

Ras-related protein R-Ras is a protein that in humans is encoded by the RRAS gene. RRAS has been shown to interact with RASSF5, NCK1, Bcl-2, ARAF and RALGDS. Regulates the organization of the actin cytoskeleton. Interacts with PLCE1. Interacts (active GTP-bound form preferentially) with RGS14.

订购热线: 4008-898-798

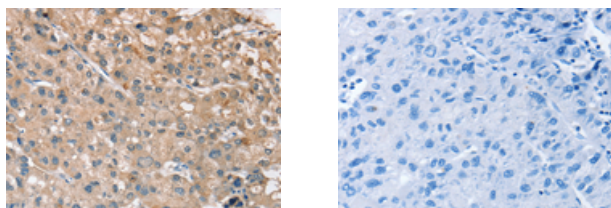
### Applications

#### Immunohistochemistry

Predicted cell location: Cytoplasm

Positive control: Human liver cancer

Recommended dilution: 25-100



The image on the left is immunohistochemistry of paraffin-embedded Human liver cancer tissue using ml162143(RRAS Antibody) at dilution 1/30, on the right is treated with synthetic peptide. (Original magnification:  $\times 200$ )

#### Western blotting

Predicted band size: 23 kDa

Positive control: Human chromaffin cells tumor tissue and NIH/3T3 cells

Recommended dilution: 200-1000

Gel: 12% SDS-PAGE

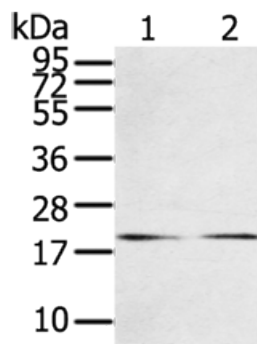
Lysate: 40  $\mu$ g

Lane 1-2: Human chromaffin cell tumor tissue, NIH/3T3 cells

Primary antibody: ml162143(RRAS Antibody) at dilution 1/200

Secondary antibody: Goat anti rabbit IgG at 1/8000 dilution

Exposure time: 2 minutes



#### ELISA

Recommended dilution: 1000-2000

联系电话: 4008-898-798, 021-61725725

联系QQ: 2881505695, 2881505696

邮箱: [mlbio\\_cn@yeah.net](mailto:mlbio_cn@yeah.net)

网址: [www.mlbio.cn](http://www.mlbio.cn)