

Anti-PRAF2 antibody

Cat. No.	ml162146
Package	25 µl/100 µl/200 µl
Storage	-20°C, pH7.4 PBS, 0.05% NaN ₃ , 40% Glycerol

Product overview

Description	Anti-PRAF2 rabbit polyclonal antibody
Applications	ELISA, WB, IHC
Immunogen	Synthetic peptide of human PRAF2
Reactivity	Human, Mouse
Content	0.4 mg/ml
Host species	Rabbit
Ig class	Immunogen-specific rabbit IgG
Purification	Antigen affinity purification

Target information

Symbol	PRAF2
Full name	PRA1 domain family, member 2
Synonyms	JM4
Swissprot	O60831

Target Background

JM4 (Jena-Muenchen 4), also known as PRAF2 (PRA1 domain family, member 2), is a 178 amino acid endosomal multi-pass membrane protein involved in vesicular trafficking and Endoplasmic reticulum/Golgi transport. As a member of the PRA1 family, JM4 contains four putative transmembrane (TM) domains, interacts with the CC chemokine receptor 5 (CCR5) and colocalizes with Calnexin in the ER and mannose 6-phosphate receptor (CD-MPR) in the Golgi apparatus.

订购热线: 4008-898-798

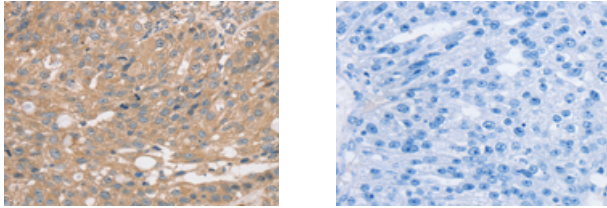
Applications

Immunohistochemistry

Predicted cell location: Cytoplasm or Cell membrane

Positive control: Human breast cancer

Recommended dilution: 25-100



The image on the left is immunohistochemistry of paraffin-embedded Human breast cancer tissue using ml162146(PRAF2 Antibody) at dilution 1/35, on the right is treated with synthetic peptide. (Original magnification: $\times 200$)

Western blotting

Predicted band size: 19 kDa

Positive control: Human fetal brain tissue and A549 cells, hela and 293T cells

Recommended dilution: 200-1000

Gel: 12% SDS-PAGE

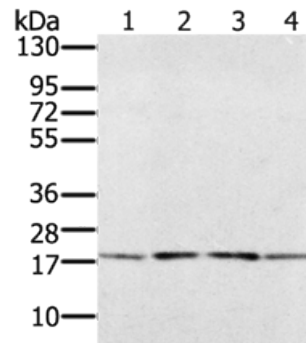
Lysate: 40 μ g

Lane 1-4: Human fetal brain tissue, A549 cells, hela cells, 293T cells

Primary antibody: ml162146(PRAF2 Antibody) at dilution 1/200

Secondary antibody: Goat anti rabbit IgG at 1/8000 dilution

Exposure time: 20 seconds



ELISA

Recommended dilution: 1000-2000

联系电话: 4008-898-798, 021-61725725

联系QQ: 2881505695, 2881505696

邮箱: mlbio_cn@yeah.net

网址: www.mlbio.cn