

## Anti-RUVBL1 antibody

|                 |   |
|-----------------|---|
| <b>Cat. No.</b> | ml125060  |
| <b>Package</b>  | 25 µl/100 µl/200 µl                                     |
| <b>Storage</b>  | -20°C, pH7.4 PBS, 0.05% NaN <sub>3</sub> , 40% Glycerol |

### Product overview

|                     |  |
|---------------------|--|
| <b>Description</b>  | Anti-RUVBL1 rabbit polyclonal antibody |
| <b>Applications</b> | ELISA, WB, IHC                         |
| <b>Immunogen</b>    | Fusion protein of human RUVBL1         |
| <b>Reactivity</b>   | Human, Mouse, Rat                      |
| <b>Content</b>      | 1.14 mg/ml                             |
| <b>Host species</b> | Rabbit                                 |
| <b>Ig class</b>     | Immunogen-specific rabbit IgG          |
| <b>Purification</b> | Antigen affinity purification          |

### Target information

|                  |   |
|------------------|---|
| <b>Symbol</b>    | RUVBL1  |
| <b>Full name</b> | RuvB like AAA ATPase 1  |
| <b>Synonyms</b>  | RVB1; TIH1; ECP54; TIP49; ECP-54; INO80H; NMP238; PONTIN; TIP49A; NMP 238; Pontin52 |
| <b>Swissprot</b> | Q9Y265  |

### Target Background

This gene encodes a protein that has both DNA-dependent ATPase and DNA helicase activities and belongs to the ATPases associated with diverse cellular activities (AAA+) protein family. The encoded protein associates with several multisubunit transcriptional complexes and with protein complexes involved in both ATP-dependent remodeling and histone modification. Alternate splicing results in multiple transcript variants.

订购热线: 4008-898-798

## Applications

### Immunohistochemistry

Predicted cell location: Nucleus

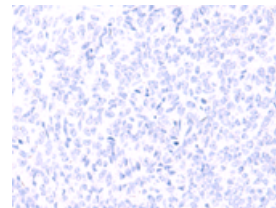
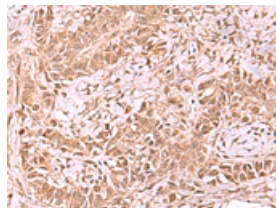
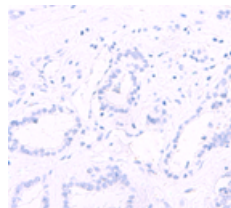
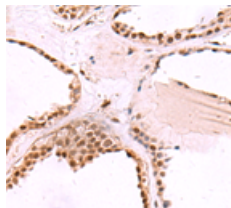
Positive control: Human thyroid cancer

Recommended dilution: 50-300

Predicted cell location: Nucleus

Positive control: Human ovarian cancer

Recommended dilution: 50-300



The image on the left is immunohistochemistry of paraffin-embedded Human thyroid cancer tissue using ml125060(RUVBL1 Antibody) at dilution 1/65, on the right is treated with fusion protein. (Original magnification:  $\times 200$ )

The image on the left is immunohistochemistry of paraffin-embedded Human ovarian cancer tissue using ml125060(RUVBL1 Antibody) at dilution 1/65, on the right is treated with fusion protein. (Original magnification:  $\times 200$ )

### Western blotting

Predicted band size: 50 kDa

Positive control: 293T, HepG2, K562, HT29, A549 and Raji cell lysates

Recommended dilution: 1000-5000

Gel: 8%SDS-PAGE

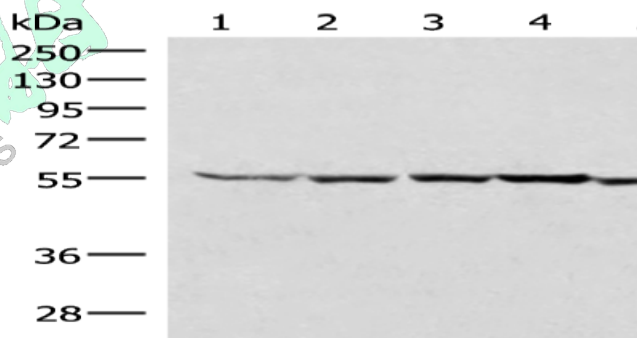
Lysate: 40  $\mu$ g

Lane 1-6: 293T, HepG2, K562, HT29, A549 and Raji cell lysates

Primary antibody: ml125060(RUVBL1 Antibody) at dilution 1/2000

Secondary antibody: Goat anti rabbit IgG at 1/8000 dilution

Exposure time: 15 seconds



### ELISA

Recommended dilution: 5000-10000

联系电话: 4008-898-798, 021-61725725

联系QQ: 2881505695, 2881505696

邮箱: [mlbio\\_cn@yeah.net](mailto:mlbio_cn@yeah.net)

网址: [www.mlbio.cn](http://www.mlbio.cn)