

Anti-SAMD9L antibody

Cat. No.	ml162155
Package	25 µl/100 µl/200 µl
Storage	-20°C, pH7.4 PBS, 0.05% NaN ₃ , 40% Glycerol

Product overview

Description	Anti-SAMD9L rabbit polyclonal antibody
Applications	ELISA, WB, IHC
Immunogen	Synthetic peptide of human SAMD9L
Reactivity	Human
Content	0.8 mg/ml
Host species	Rabbit
Ig class	Immunogen-specific rabbit IgG
Purification	Antigen affinity purification

Target information

Symbol	SAMD9L
Full name	sterile alpha motif domain containing 9-like
Synonyms	UEF1; DRIF2; C7orf6
Swissprot	Q8IVG5

Target Background

SAMD9L(sterile α motif domain containing 9-like), also known as UEF1,DRIF2 or C7orf6, is a 1,584 amino acid protein that contains one N-terminal sterile motif (SAM) domain. Expressed in a variety of adult and fetal tissues, SAMD9L may be involved (via its SAM domain) in protein-protein interactions, playing a role in biological processes (such as developmental regulation) throughout the body. Orthologs of SAMD9L are present in nearly all species with the exception of fish, chicken and frog, implying a conserved function in higher eukaryotes.

订购热线: 4008-898-798

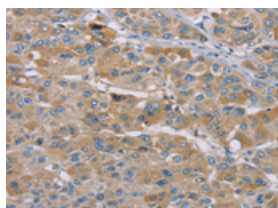
Applications

Immunohistochemistry

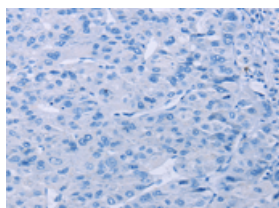
Predicted cell location: Cytoplasm

Positive control: Human liver cancer

Recommended dilution: 25-100



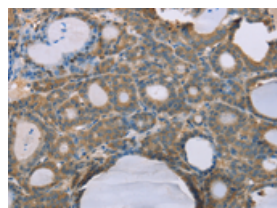
The image on the left is immunohistochemistry of paraffin-embedded Human liver cancer tissue using ml162155(SAMD9L Antibody) at dilution 1/35, on the right is treated with synthetic peptide. (Original magnification: $\times 200$)



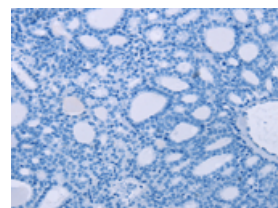
Predicted cell location: Cytoplasm

Positive control: Human thyroid cancer

Recommended dilution: 25-100



The image on the left is immunohistochemistry of paraffin-embedded Human thyroid cancer tissue using ml162155(SAMD9L Antibody) at dilution 1/35, on the right is treated with synthetic peptide. (Original magnification: $\times 200$)



Western blotting

Predicted band size: 185 kDa

Positive control: Human colon cancer tissue

Recommended dilution: 200-1000

Gel: 6%SDS-PAGE

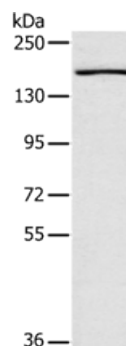
Lysate: 40 μ g

Lane: Human colon cancer tissue

Primary antibody: ml162155(SAMD9L Antibody) at dilution 1/300

Secondary antibody: Goat anti rabbit IgG at 1/8000 dilution

Exposure time: 30 seconds



ELISA

Recommended dilution: 1000-2000

联系电话: 4008-898-798, 021-61725725

联系QQ: 2881505695, 2881505696

邮箱: mlbio_cn@yeah.net

网址: www.mlbio.cn