

Anti-Ly6a antibody

Cat. No.	ml162160
Package	25 µl/100 µl/200 µl
Storage	-20°C, pH7.4 PBS, 0.05% NaN ₃ , 40% Glycerol

Product overview

Description	Anti-Ly6a rabbit polyclonal antibody
Applications	ELISA, WB
Immunogen	Synthetic peptide of mouse Ly6a
Reactivity	Mouse
Content	0.4 mg/ml
Host species	Rabbit
Ig class	Immunogen-specific rabbit IgG
Purification	Antigen affinity purification

Target information

Symbol	Ly6a
Full name	lymphocyte antigen 6 complex, locus A
Synonyms	TAP; Sca1; Sca-1; Ly-6A.2; Ly-6A/E; Ly-6E.1
Swissprot	P05533

Target Background

Sca-1 is an 18 kDa phosphatidylinositol-anchored protein that is a member of the lymphocyte antigen 6 (Ly-6) family. Sca-1 is encoded by the strain-specific Ly-6 E/A allelic gene. Its expression on multipotent hematopoietic stem cells (HSC) has been used as a marker of HSCs in mice of both Ly-6 haplotypes. Sca-1-positive HSCs can be found in the adult bone marrow, fetal liver, and mobilized peripheral blood and spleen in the adult animal.

订购热线: 4008-898-798

Applications

Western blotting

Predicted band size: 14 kDa

Positive control: Mouse skin tissue

Recommended dilution: 200-1000

Gel: 12%SDS-PAGE

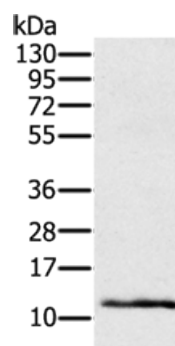
Lysate: 40 µg

Lane: Mouse skin tissue

Primary antibody: ml162160(Ly6a Antibody) at dilution 1/200

Secondary antibody: Goat anti rabbit IgG at 1/8000 dilution

Exposure time: 2 minutes



ELISA

Recommended dilution: 1000-2000

联系电话: 4008-898-798, 021-61725725

联系QQ: 2881505695, 2881505696

邮箱: mlbio_cn@yeah.net

网址: www.mlbio.cn