

Anti-NEMF antibody

Cat. No.	ml162174
Package	25 µl/100 µl/200 µl
Storage	-20°C, pH7.4 PBS, 0.05% NaN ₃ , 40% Glycerol

Product overview

Description	Anti-NEMF rabbit polyclonal antibody
Applications	ELISA, WB, IHC
Immunogen	Synthetic peptide of human NEMF
Reactivity	Human
Content	0.4 mg/ml
Host species	Rabbit
Ig class	Immunogen-specific rabbit IgG
Purification	Antigen affinity purification

Target information

Symbol	NEMF
Full name	nuclear export mediator factor
Synonyms	NY-CO-1; SDCCAG1
Swissprot	O60524

Target Background

SDCCAG1, which called NY-CO-1, from a colon cancer cDNA library. The deduced 362-amino acid protein contains a nuclear targeting signal. Expressed in brain, heart, liver, lung, spleen, and skeletal muscle. Also expressed at lower levels in stomach and testis.

订购热线: 4008-898-798

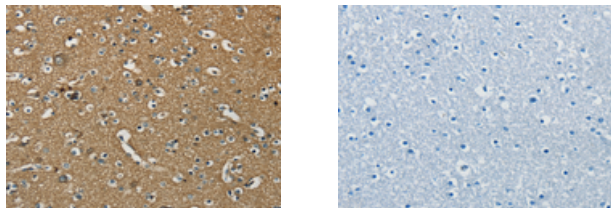
Applications

Immunohistochemistry

Predicted cell location: Cytoplasm

Positive control: Human brain

Recommended dilution: 25-100



The image on the left is immunohistochemistry of paraffin-embedded Human brain tissue using ml162174(NEMF Antibody) at dilution 1/30, on the right is treated with synthetic peptide. (Original magnification: $\times 200$)

Western blotting

Predicted band size: 123 kDa

Positive control: Jurkat cells

Recommended dilution: 200-1000

Gel: 6%SDS-PAGE

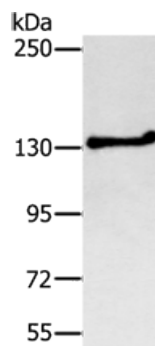
Lysate: 40 μ g

Lane: Jurkat cells

Primary antibody: ml162174(NEMF Antibody) at dilution 1/200

Secondary antibody: Goat anti rabbit IgG at 1/8000 dilution

Exposure time: 5 minutes



ELISA

Recommended dilution: 1000-2000

联系电话: 4008-898-798, 021-61725725

联系QQ: 2881505695, 2881505696

邮箱: mlbio_cn@yeah.net

网址: www.mlbio.cn