

## Anti-TUBGCP4 antibody

<b>Cat. No.</b>	ml125133
<b>Package</b>	25 µl/100 µl/200 µl
<b>Storage</b>	-20°C, pH7.4 PBS, 0.05% NaN <sub>3</sub> , 40% Glycerol

### Product overview

<b>Description</b>	Anti-TUBGCP4 rabbit polyclonal antibody
<b>Applications</b>	ELISA, WB
<b>Immunogen</b>	Fusion protein of human TUBGCP4
<b>Reactivity</b>	Human, Mouse
<b>Content</b>	0.66 mg/ml
<b>Host species</b>	Rabbit
<b>Ig class</b>	Immunogen-specific rabbit IgG
<b>Purification</b>	Antigen affinity purification

### Target information

<b>Symbol</b>	TUBGCP4
<b>Full name</b>	tubulin gamma complex associated protein 4
<b>Synonyms</b>	76P; GCP4; GCP-4; Grip76; MCCRP3
<b>Swissprot</b>	Q9UGJ1

### Target Background

This gene encodes a component of the gamma-tubulin ring complex, which is required for microtubule nucleation. In mammalian cells, the protein localizes to centrosomes in association with gamma-tubulin. Crystal structure analysis revealed a structure composed of five helical bundles arranged around conserved hydrophobic cores. An exposed surface area located in the C-terminal domain is essential and sufficient for direct binding to gamma-tubulin. Mutations in this gene that alter microtubule organization are associated with microcephaly and chorioretinopathy. Alternative splicing results in multiple transcript variants.

订购热线: 4008-898-798

## Applications

### Western blotting

Predicted band size: 76 kDa

Positive control: HT-29, NIH/3T3, 231, Hela, RAW264.7, K562 and LOVO cell lysates

Recommended dilution: 500-2000

Gel: 8%SDS-PAGE

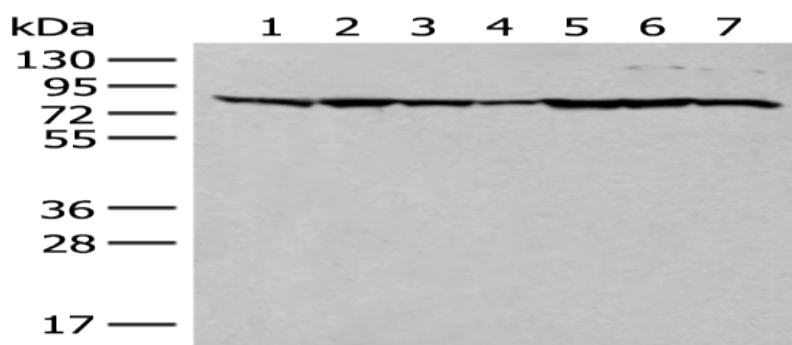
Lysate: 40  $\mu$ g

Lane 1-7: HT-29, NIH/3T3, 231, Hela,  
RAW264.7, K562 and LOVO cell lysates

Primary antibody: ml125133(TUBGCP4  
Antibody) at dilution 1/300

Secondary antibody: Goat anti rabbit IgG  
at 1/8000 dilution

Exposure time: 1 minute



### ELISA

Recommended dilution: 5000-10000

联系电话: 4008-898-798, 021-61725725

联系QQ: 2881505695, 2881505696

邮箱: [mlbio\\_cn@yeah.net](mailto:mlbio_cn@yeah.net)

网址: [www.mlbio.cn](http://www.mlbio.cn)