

Anti-SERINC4 antibody

Cat. No.	ml162191
Package	25 µl/100 µl/200 µl
Storage	-20°C, pH7.4 PBS, 0.05% NaN ₃ , 40% Glycerol

Product overview

Description	Anti-SERINC4 rabbit polyclonal antibody
Applications	ELISA, WB
Immunogen	Synthetic peptide of human SERINC4
Reactivity	Human
Content	0.9 mg/ml
Host species	Rabbit
Ig class	Immunogen-specific rabbit IgG
Purification	Antigen affinity purification

Target information

Symbol	SERINC4
Full name	serine incorporator 4
Synonyms	
Swissprot	A6NH21

Target Background

SERINC4 (serine incorporator 4) is a 518 amino acid multi-pass membrane protein that belongs to the TDE1 family. The SERINC4 protein Incorporates a polar amino acid serine into membranes and facilitates the synthesis of two serine-derived lipids, phosphatidylserine and sphingolipids. Because SERINC proteins contain 11 transmembrane segments resembling amino acid transporters, SERINC4 may also function as an L-serine transporter by carrying serine molecules into the hydrophobic milieu of membrane lipid bilayers.

订购热线: 4008-898-798

Applications

Western blotting

Predicted band size: 57 kDa

Positive control: Human breast infiltrative duct tissue

Recommended dilution: 500-2000

Gel: 8%SDS-PAGE

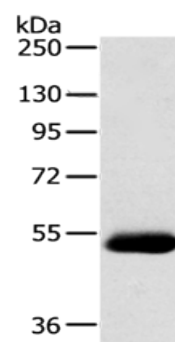
Lysate: 40 µg

Lane: Human breast infiltrative duct tissue

Primary antibody: ml162191(SERINC4 Antibody) at dilution 1/200

Secondary antibody: Goat anti rabbit IgG at 1/8000 dilution

Exposure time: 5 minutes



ELISA

Recommended dilution: 2000-5000

联系电话: 4008-898-798, 021-61725725

联系QQ: 2881505695, 2881505696

邮箱: mlbio_cn@yeah.net

网址: www.mlbio.cn