

## Anti-RPS27L antibody

<b>Cat. No.</b>	ml125183
<b>Package</b>	25 µl/100 µl/200 µl
<b>Storage</b>	-20°C, pH7.4 PBS, 0.05% NaN <sub>3</sub> , 40% Glycerol

### Product overview

<b>Description</b>	Anti-RPS27L rabbit polyclonal antibody
<b>Applications</b>	ELISA, WB, IHC
<b>Immunogen</b>	Fusion protein of human RPS27L
<b>Reactivity</b>	Human, Mouse, Rat
<b>Content</b>	0.9 mg/ml
<b>Host species</b>	Rabbit
<b>Ig class</b>	Immunogen-specific rabbit IgG
<b>Purification</b>	Antigen affinity purification

### Target information

<b>Symbol</b>	RPS27L
<b>Full name</b>	ribosomal protein S27 like
<b>Synonyms</b>	
<b>Swissprot</b>	Q71UM5

### Target Background

This gene encodes a protein sharing 96% amino acid similarity with ribosomal protein S27, which suggests the encoded protein may be a component of the 40S ribosomal subunit.

订购热线: 4008-898-798

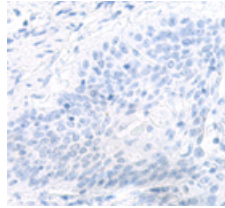
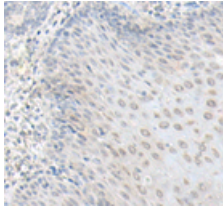
## Applications

### Immunohistochemistry

Predicted cell location: Nucleus

Positive control: Human esophagus cancer

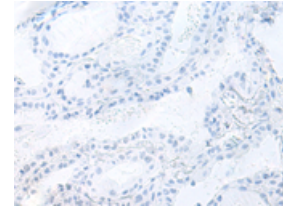
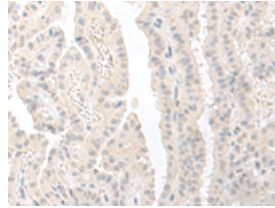
Recommended dilution: 40-200



Predicted cell location: Nucleus

Positive control: Human thyroid cancer

Recommended dilution: 40-200



The image on the left is immunohistochemistry of paraffin-embedded Human esophagus cancer tissue using ml125183(RPS27L Antibody) at dilution 1/50, on the right is treated with fusion protein. (Original magnification:  $\times 200$ )

The image on the left is immunohistochemistry of paraffin-embedded Human thyroid cancer tissue using ml125183(RPS27L Antibody) at dilution 1/50, on the right is treated with fusion protein. (Original magnification:  $\times 200$ )

### Western blotting

Predicted band size: 9 kDa

Positive control: HT-29 cell, LOVO cell, 231 cell, Rat lung tissue, A172 cell, HUVEC cell and Mouse adrenal gland tissue lysates

Recommended dilution: 200-1000

Gel: 12% SDS-PAGE

Lysate: 40  $\mu$ g

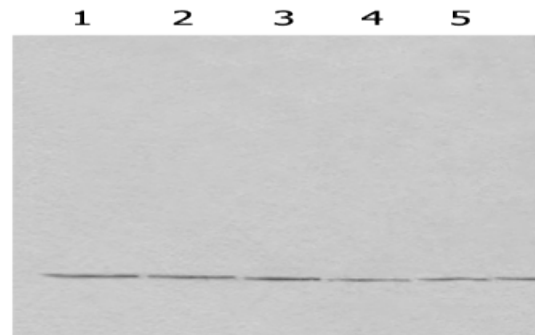
Lane 1-7: HT-29 cell, LOVO cell, 231 cell, Rat lung tissue, A172 cell, HUVEC cell and Mouse adrenal gland tissue lysates

Primary antibody: ml125183(RPS27L Antibody) at dilution 1/350

Secondary antibody: Goat anti rabbit IgG at 1/8000 dilution

Exposure time: 10 seconds

kDa  
95 —  
72 —  
55 —  
36 —  
28 —  
17 —  
10 —



### ELISA

Recommended dilution: 5000-10000

联系电话: 4008-898-798, 021-61725725

联系QQ: 2881505695, 2881505696

邮箱: mlbio\_cn@yeah.net



订购热线: 4008-898-798

网址: [www.mlbio.cn](http://www.mlbio.cn)