

Anti-DPY30 antibody

Cat. No.	ml125195
Package	25 µl/100 µl/200 µl
Storage	-20°C, pH7.4 PBS, 0.05% NaN ₃ , 40% Glycerol

Product overview

Description	Anti-DPY30 rabbit polyclonal antibody
Applications	ELISA, WB, IHC
Immunogen	Fusion protein of human DPY30
Reactivity	Human, Mouse, Rat
Content	1.5 mg/ml
Host species	Rabbit
Ig class	Immunogen-specific rabbit IgG
Purification	Antigen affinity purification

Target information

Symbol	DPY30
Full name	dpy-30, histone methyltransferase complex regulatory subunit
Synonyms	Cps25; Saf19; HDPY-30
Swissprot	Q9C005

Target Background

This gene encodes an integral core subunit of the SET1/MLL family of H3K4 methyltransferases. The encoded protein directly controls cell cycle regulators and plays an important role in the proliferation and differentiation of human hematopoietic progenitor cells.

订购热线: 4008-898-798

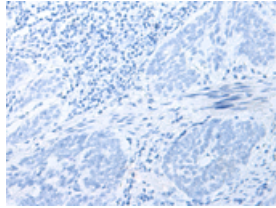
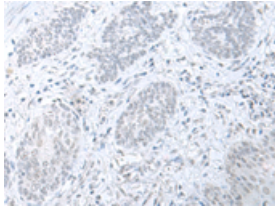
Applications

Immunohistochemistry

Predicted cell location: Nucleus

Positive control: Human esophagus cancer

Recommended dilution: 50-300

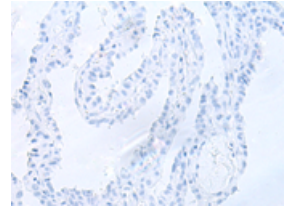
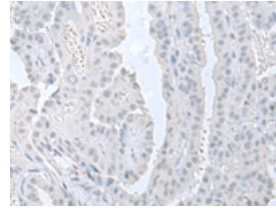


The image on the left is immunohistochemistry of paraffin-embedded Human esophagus cancer tissue using ml125195(DPY30 Antibody) at dilution 1/85, on the right is treated with fusion protein. (Original magnification: $\times 200$)

Predicted cell location: Nucleus

Positive control: Human thyroid cancer

Recommended dilution: 50-300



The image on the left is immunohistochemistry of paraffin-embedded Human thyroid cancer tissue using ml125195(DPY30 Antibody) at dilution 1/85, on the right is treated with fusion protein. (Original magnification: $\times 200$)

Western blotting

Predicted band size: 11 kDa

Positive control: Mouse adrenal gland tissue lysate

Recommended dilution: 500-2000

Gel: 12% SDS-PAGE

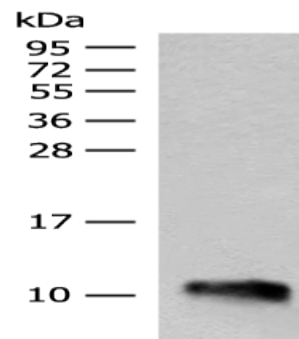
Lysate: 40 μ g

Lane: Mouse adrenal gland tissue lysate

Primary antibody: ml125195(DPY30 Antibody) at dilution 1/400

Secondary antibody: Goat anti rabbit IgG at 1/8000 dilution

Exposure time: 30 seconds



ELISA

Recommended dilution: 5000-10000

联系电话: 4008-898-798, 021-61725725

联系QQ: 2881505695, 2881505696

邮箱: mlbio_cn@yeah.net

网址: www.mlbio.cn