

Anti-SRP68 antibody

Cat. No.	ml162206
Package	25 µl/100 µl/200 µl
Storage	-20°C, pH7.4 PBS, 0.05% NaN ₃ , 40% Glycerol

Product overview

Description	Anti-SRP68 rabbit polyclonal antibody
Applications	ELISA, WB
Immunogen	Synthetic peptide of human SRP68
Reactivity	Human, Mouse
Content	0.3 mg/ml
Host species	Rabbit
Ig class	Immunogen-specific rabbit IgG
Purification	Antigen affinity purification

Target information

Symbol	SRP68
Full name	signal recognition particle 68kDa
Synonyms	
Swissprot	Q9UHB9

Target Background

This gene encodes a subunit of the signal recognition particle (SRP). The SRP is a ribonucleoprotein complex that transports secreted and membrane proteins to the endoplasmic reticulum for processing. The complex includes a 7S RNA and six protein subunits. The encoded protein is the 68kDa component of the SRP, and forms a heterodimer with the 72kDa subunit that is required for SRP function.

订购热线: 4008-898-798

Applications

Western blotting

Predicted band size: 71 kDa

Positive control: 293T, HepG2 and K562 cells

Recommended dilution: 500-2000

Gel: 6% SDS-PAGE

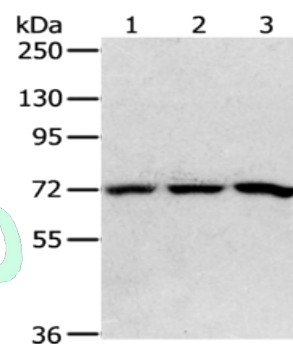
Lysate: 40 µg

Lane 1-3: 293T cells, HepG2 cells, K562 cells

Primary antibody: ml162206 (SRP68 Antibody) at dilution 1/200

Secondary antibody: Goat anti rabbit IgG at 1/8000 dilution

Exposure time: 5 seconds



ELISA

Recommended dilution: 2000-5000

联系电话: 4008-898-798, 021-61725725

联系QQ: 2881505695, 2881505696

邮箱: mlbio_cn@yeah.net

网址: www.mlbio.cn