

## Anti-SLC14A1 antibody

<b>Cat. No.</b>	ml162210
<b>Package</b>	25 µl/100 µl/200 µl
<b>Storage</b>	-20°C, pH7.4 PBS, 0.05% NaN <sub>3</sub> , 40% Glycerol

### Product overview

<b>Description</b>	Anti-SLC14A1 rabbit polyclonal antibody
<b>Applications</b>	ELISA, WB
<b>Immunogen</b>	Synthetic peptide of human SLC14A1
<b>Reactivity</b>	Human, Mouse
<b>Content</b>	0.3 mg/ml
<b>Host species</b>	Rabbit
<b>Ig class</b>	Immunogen-specific rabbit IgG
<b>Purification</b>	Antigen affinity purification

### Target information

<b>Symbol</b>	SLC14A1
<b>Full name</b>	solute carrier family 14 (urea transporter), member 1 (Kidd blood group)
<b>Synonyms</b>	JK; UT1; UTE; HUT11; RACH1; RACH2; UT-B1; HsT1341
<b>Swissprot</b>	Q13336

### Target Background

The protein encoded by this gene is a membrane transporter that mediates urea transport in erythrocytes. This gene forms the basis for the Kidd blood group system. Mediates urea transport in erythrocytes By similarity. Low-affinity facilitative urea transporter that allow rapid equilibration between the urinary space and the hyperosmotic interstitium. the rate of urea conduction is increased by hypoosmotic stress.

订购热线: 4008-898-798

#### Applications

##### Western blotting

Predicted band size: 43 kDa

Positive control: Mouse kidney tissue

Recommended dilution: 200-1000

Gel: 8%SDS-PAGE

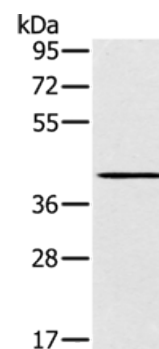
Lysate: 40 µg

Lane: Mouse kidney tissue

Primary antibody: ml162210(SLC14A1 Antibody) at dilution 1/200

Secondary antibody: Goat anti rabbit IgG at 1/8000 dilution

Exposure time: 2 minutes



##### ELISA

Recommended dilution: 1000-2000

联系电话: 4008-898-798, 021-61725725

联系QQ: 2881505695, 2881505696

邮箱: [mlbio\\_cn@yeah.net](mailto:mlbio_cn@yeah.net)

网址: [www.mlbio.cn](http://www.mlbio.cn)