

Anti-ISG15 antibody

Cat. No.	ml125264
Package	25 µl/100 µl/200 µl
Storage	-20°C, pH7.4 PBS, 0.05% NaN ₃ , 40% Glycerol

Product overview

Description	Anti-ISG15 rabbit polyclonal antibody
Applications	ELISA, WB
Immunogen	Fusion protein of human ISG15
Reactivity	Human
Content	1.5 mg/ml
Host species	Rabbit
Ig class	Immunogen-specific rabbit IgG
Purification	Antigen affinity purification

Target information

Symbol	ISG15
Full name	ISG15 ubiquitin-like modifier
Synonyms	G1P2; IP17; UCRP; IFI15; IMD38; hUCRP
Swissprot	P05161

Target Background

The protein encoded by this gene is a ubiquitin-like protein that is conjugated to intracellular target proteins upon activation by interferon-alpha and interferon-beta. Several functions have been ascribed to the encoded protein, including chemotactic activity towards neutrophils, direction of ligated target proteins to intermediate filaments, cell-to-cell signaling, and antiviral activity during viral infections. While conjugates of this protein have been found to be noncovalently attached to intermediate filaments, this protein is sometimes secreted.

订购热线: 4008-898-798

Applications

Western blotting

Predicted band size: 18 kDa

Positive control: HeLa and PC3 cell lysates

Recommended dilution: 500-2000

Gel: 12% SDS-PAGE

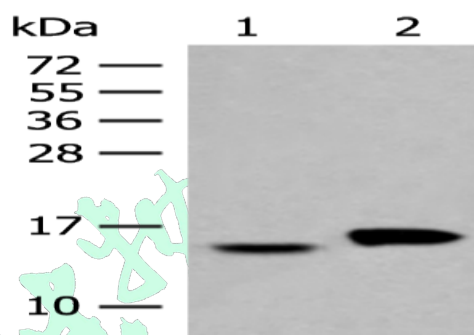
Lysate: 40 µg

Lane 1-2: HeLa and PC3 cell lysates

Primary antibody: ml125264 (ISG15 Antibody) at dilution 1/500

Secondary antibody: Goat anti rabbit IgG at 1/8000 dilution

Exposure time: 3 minutes



ELISA

Recommended dilution: 5000-10000

联系电话: 4008-898-798, 021-61725725

联系QQ: 2881505695, 2881505696

邮箱: mlbio_cn@yeah.net

网址: www.mlbio.cn