

Anti-SEC11A antibody

Cat. No.	ml125279
Package	25 µl/100 µl/200 µl
Storage	-20°C, pH7.4 PBS, 0.05% NaN ₃ , 40% Glycerol

Product overview

Description	Anti-SEC11A rabbit polyclonal antibody
Applications	ELISA, WB, IHC
Immunogen	Fusion protein of human SEC11A
Reactivity	Human, Mouse, Rat
Content	0.78 mg/ml
Host species	Rabbit
Ig class	Immunogen-specific rabbit IgG
Purification	Antigen affinity purification

Target information

Symbol	SEC11A
Full name	SEC11 homolog A, signal peptidase complex subunit
Synonyms	SPC18; SPCS4A; SEC11L1; sid2895; 1810012E07Rik
Swissprot	P67812

Target Background

This gene encodes a member of the peptidase S26B family. The encoded protein is an 18kDa subunit of the signal peptidase complex and has been linked to cell migration and invasion, gastric cancer and lymph node metastasis. Alternative splicing results in multiple transcript variants. A related pseudogene has been identified on chromosome 8.

订购热线: 4008-898-798

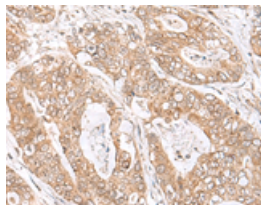
Applications

Immunohistochemistry

Predicted cell location: Cell membrane

Positive control: Human gastric cancer

Recommended dilution: 40-200



The image is immunohistochemistry of paraffin-embedded Human gastric cancer tissue using ml125279(SEC11A Antibody) at dilution 1/45. (Original magnification: ×200)

Western blotting

Predicted band size: 21 kDa

Positive control: TM4, HEPG2 and A549 cell, Mouse liver tissue lysates

Recommended dilution: 500-2000

Gel: 12%SDS-PAGE

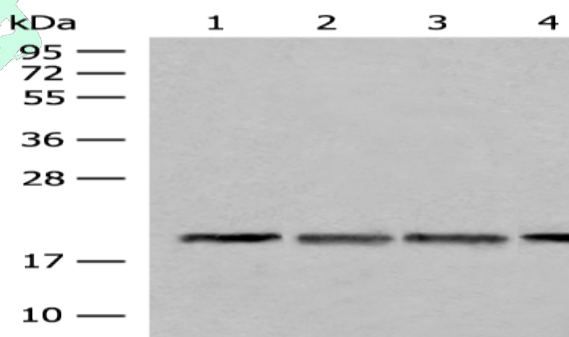
Lysate: 40 µg

Lane 1-4: TM4, HEPG2 and A549 cell, Mouse liver tissue lysates

Primary antibody: ml125279(SEC11A Antibody) at dilution 1/300

Secondary antibody: Goat anti rabbit IgG at 1/8000 dilution

Exposure time: 3 seconds



ELISA

Recommended dilution: 5000-10000

联系电话: 4008-898-798, 021-61725725

联系QQ: 2881505695, 2881505696

邮箱: mlbio_cn@yeah.net

网址: www.mlbio.cn