

Anti-PCTP antibody

Cat. No.	ml125323
Package	25 µl/100 µl/200 µl
Storage	-20°C, pH7.4 PBS, 0.05% NaN ₃ , 40% Glycerol

Product overview

Description	Anti-PCTP rabbit polyclonal antibody
Applications	ELISA, WB, IHC
Immunogen	Fusion protein of human PCTP
Reactivity	Human, Mouse
Content	0.54 mg/ml
Host species	Rabbit
Ig class	Immunogen-specific rabbit IgG
Purification	Antigen affinity purification

Target information

Symbol	PCTP
Full name	phosphatidylcholine transfer protein
Synonyms	PC-TP; STARD2
Swissprot	Q9UKL6

Target Background

Catalyzes the transfer of phosphatidylcholine between membranes. Binds a single lipid molecule.

订购热线: 4008-898-798

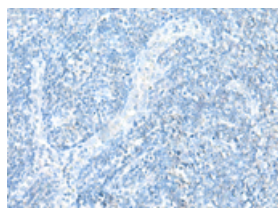
Applications

Immunohistochemistry

Predicted cell location: Cytoplasm or Nucleus

Positive control: Human tonsil

Recommended dilution: 40-200

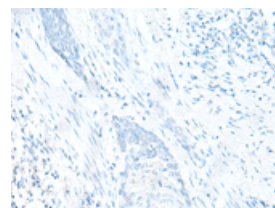
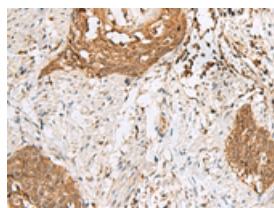


The image on the left is immunohistochemistry of paraffin-embedded Human tonsil tissue using ml125323(PCTP Antibody) at dilution 1/30, on the right is treated with fusion protein. (Original magnification: ×200)

Predicted cell location: Cytoplasm or Nucleus

Positive control: Human esophagus cancer

Recommended dilution: 40-200



The image on the left is immunohistochemistry of paraffin-embedded Human esophagus cancer tissue using ml125323(PCTP Antibody) at dilution 1/30, on the right is treated with fusion protein. (Original magnification: ×200)

Western blotting

Predicted band size: 25 kDa

Positive control: Human fetal liver tissue, HepG2 cell, Human placenta tissue lysates

Recommended dilution: 200-1000

Gel: 12%SDS-PAGE

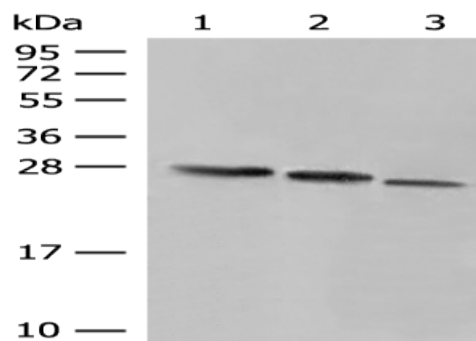
Lysate: 40 µg

Lane 1-3: Human fetal liver tissue, HepG2 cell, Human placenta tissue lysates

Primary antibody: ml125323(PCTP Antibody) at dilution 1/250

Secondary antibody: Goat anti rabbit IgG at 1/8000 dilution

Exposure time: 1 minute



ELISA

Recommended dilution: 5000-10000

联系电话: 4008-898-798, 021-61725725

联系QQ: 2881505695, 2881505696

邮箱: mlbio_cn@yeah.net

网址: www.mlbio.cn