

Anti-SLC16A10 antibody

| | |
|-----------------|---|
| Cat. No. | ml162215 |
| Package | 25 µl/100 µl/200 µl |
| Storage | -20°C, pH7.4 PBS, 0.05% NaN ₃ , 40% Glycerol |

Product overview

| | |
|---------------------|--|
| Description | Anti-SLC16A10 rabbit polyclonal antibody |
| Applications | ELISA, WB |
| Immunogen | Synthetic peptide of human SLC16A10 |
| Reactivity | Human, Mouse, Rat |
| Content | 0.3 mg/ml |
| Host species | Rabbit |
| Ig class | Immunogen-specific rabbit IgG |
| Purification | Antigen affinity purification |

Target information

| | |
|------------------|---|
| Symbol | SLC16A10 |
| Full name | solute carrier family 16 (aromatic amino acid transporter), member 10 |
| Synonyms | TAT1; MCT10; PRO0813 |
| Swissprot | Q8TF71 |

Target Background

SLC16A10 is a member of a family of plasma membrane amino acid transporters that mediate the Na(+)-independent transport of aromatic amino acids across the plasma membrane. Sodium-independent transporter that mediates the uptake of aromatic acid. Can function as a net efflux pathway for aromatic amino acids in the basolateral epithelial cells.

订购热线: 4008-898-798

Applications

Western blotting

Predicted band size: 55 kDa

Positive control: Mouse pancreas tissue

Recommended dilution: 200-1000

Gel: 8%SDS-PAGE

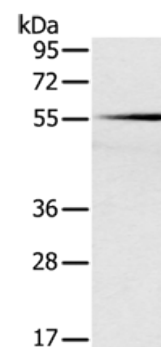
Lysate: 40 µg

Lane: Mouse pancreas tissue

Primary antibody: ml162215(SLC16A10 Antibody) at dilution 1/200

Secondary antibody: Goat anti rabbit IgG at 1/8000 dilution

Exposure time: 2 minutes



ELISA

Recommended dilution: 1000-2000

联系电话: 4008-898-798, 021-61725725

联系QQ: 2881505695, 2881505696

邮箱: mlbio_cn@yeah.net

网址: www.mlbio.cn