

Anti-PSMA3 antibody

Cat. No.	ml125359
Package	25 µl/100 µl/200 µl
Storage	-20°C, pH7.4 PBS, 0.05% NaN ₃ , 40% Glycerol

Product overview

Description	Anti-PSMA3 rabbit polyclonal antibody
Applications	ELISA, WB, IHC
Immunogen	Fusion protein of human PSMA3
Reactivity	Human, Mouse, Rat
Content	0.54 mg/ml
Host species	Rabbit
Ig class	Immunogen-specific rabbit IgG
Purification	Antigen affinity purification

Target information

Symbol	PSMA3
Full name	proteasome subunit alpha 3
Synonyms	HC8; PSC3
Swissprot	P25788

Target Background

The proteasome is a multicatalytic proteinase complex with a highly ordered ring-shaped 20S core structure. The core structure is composed of 4 rings of 28 non-identical subunits; 2 rings are composed of 7 alpha subunits and 2 rings are composed of 7 beta subunits. Proteasomes are distributed throughout eukaryotic cells at a high concentration and cleave peptides in an ATP/ubiquitin-dependent process in a non-lysosomal pathway. An essential function of a modified proteasome, the immunoproteasome, is the processing of class I MHC peptides. This gene encodes a member of the peptidase T1A family, that is a 20S core alpha subunit. Two alternative transcripts encoding different isoforms have been identified.

订购热线: 4008-898-798

Applications

Immunohistochemistry

Predicted cell location: Cytoplasm and Nucleus

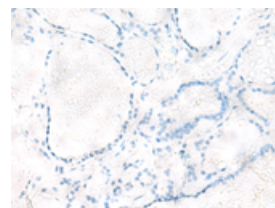
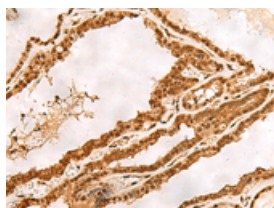
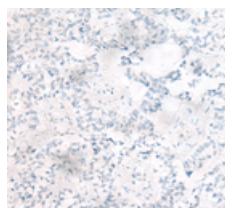
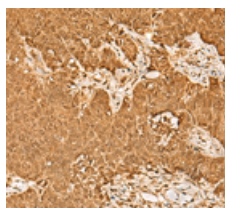
Positive control: Human ovarian cancer

Recommended dilution: 40-200

Predicted cell location: Cytoplasm and Nucleus

Positive control: Human thyroid cancer

Recommended dilution: 40-200



The image on the left is immunohistochemistry of paraffin-embedded Human ovarian cancer tissue using ml125359(PSMA3 Antibody) at dilution 1/30, on the right is treated with fusion protein. (Original magnification: $\times 200$)

The image on the left is immunohistochemistry of paraffin-embedded Human thyroid cancer tissue using ml125359(PSMA3 Antibody) at dilution 1/30, on the right is treated with fusion protein. (Original magnification: $\times 200$)

Western blotting

Predicted band size: 28 kDa

Positive control: NIH/3T3, A549, HL60 and PC3 cell, Mouse liver tissue, Mouse spleen tissue, Hela cell lysates

Recommended dilution: 500-2000

Gel: 12% SDS-PAGE

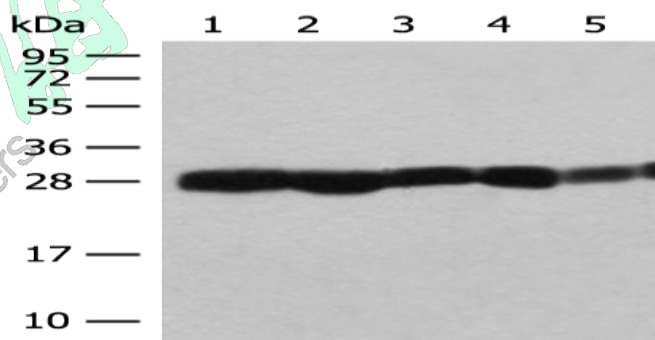
Lysate: 40 μ g

Lane 1-7: NIH/3T3, A549, HL60 and PC3 cell, Mouse liver tissue, Mouse spleen tissue, Hela cell lysates

Primary antibody: ml125359(PSMA3 Antibody) at dilution 1/200

Secondary antibody: Goat anti rabbit IgG at 1/8000 dilution

Exposure time: 10 seconds



ELISA

Recommended dilution: 5000-10000

联系电话: 4008-898-798, 021-61725725

联系QQ: 2881505695, 2881505696

邮箱: mlbio_cn@yeah.net



订购热线: 4008-898-798

网址: www.mlbio.cn