

Anti-SLC16A11 antibody

Cat. No.	ml162216
Package	25 µl/100 µl/200 µl
Storage	-20°C, pH7.4 PBS, 0.05% NaN ₃ , 40% Glycerol

Product overview

Description	Anti-SLC16A11 rabbit polyclonal antibody
Applications	ELISA, WB, IHC
Immunogen	Synthetic peptide of human SLC16A11
Reactivity	Human, Mouse
Content	0.3 mg/ml
Host species	Rabbit
Ig class	Immunogen-specific rabbit IgG
Purification	Antigen affinity purification

Target information

Symbol	SLC16A11
Full name	solute carrier family 16, member 11
Synonyms	MCT11
Swissprot	Q8NCK7

Target Background

MCT11 (Monocarboxylate transporter 11), also known as SLC16A11 (Solute carrier family 16 member 11), is a 471 proton-linked monocarboxylate transporter that catalyzes the rapid transport of monocarboxylates across the plasma membrane.

订购热线: 4008-898-798

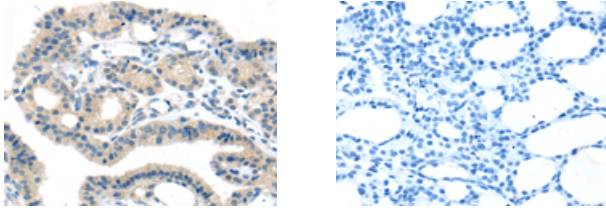
Applications

Immunohistochemistry

Predicted cell location: Cell membrane

Positive control: Human thyroid cancer

Recommended dilution: 25-100

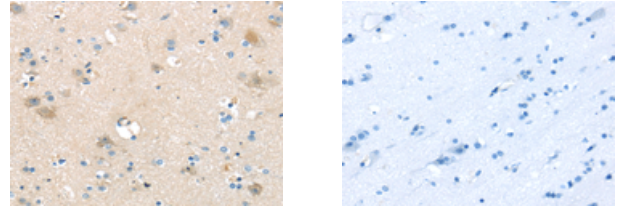


The image on the left is immunohistochemistry of paraffin-embedded Human thyroid cancer tissue using ml162216(SLC16A11 Antibody) at dilution 1/25, on the right is treated with synthetic peptide. (Original magnification: $\times 200$)

Predicted cell location: Cell membrane

Positive control: Human brain

Recommended dilution: 25-100



The image on the left is immunohistochemistry of paraffin-embedded Human brain tissue using ml162216(SLC16A11 Antibody) at dilution 1/25, on the right is treated with synthetic peptide. (Original magnification: $\times 200$)

Western blotting

Predicted band size: 48 kDa

Positive control: HepG2 cells

Recommended dilution: 200-1000

Gel: 8%SDS-PAGE

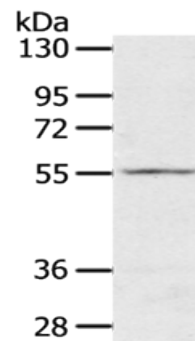
Lysate: 40 μ g

Lane: HepG2 cells

Primary antibody: ml162216(SLC16A11 Antibody) at dilution 1/200

Secondary antibody: Goat anti rabbit IgG at 1/8000 dilution

Exposure time: 2 minutes



ELISA

Recommended dilution: 1000-2000

联系电话: 4008-898-798, 021-61725725

联系QQ: 2881505695, 2881505696

邮箱: mlbio_cn@yeah.net

网址: www.mlbio.cn