

Anti-SLC26A5 antibody

Cat. No.	ml162227
Package	25 µl/100 µl/200 µl
Storage	-20°C, pH7.4 PBS, 0.05% NaN ₃ , 40% Glycerol

Product overview

Description	Anti-SLC26A5 rabbit polyclonal antibody
Applications	ELISA, WB
Immunogen	Synthetic peptide of human SLC26A5
Reactivity	Human, Mouse, Rat
Content	0.1 mg/ml
Host species	Rabbit
Ig class	Immunogen-specific rabbit IgG
Purification	Antigen affinity purification

Target information

Symbol	SLC26A5
Full name	solute carrier family 26 (anion exchanger), member 5
Synonyms	PRES; DFN61
Swissprot	P58743

Target Background

This gene encodes a member of the SLC26A/SuP transporter family. The protein functions as a molecular motor in motile outer hair cells (OHCs) of the cochlea, inducing changes in cell length that act to amplify sound levels. The transmembrane protein is an incomplete anion transporter, and does not allow anions to cross the cell membrane but instead undergoes a conformational change in response to changes in intracellular Cl⁻ levels that results in a change in cell length.

订购热线: 4008-898-798

Applications

Western blotting

Predicted band size: 81 kDa

Positive control: Mouse brain tissue

Recommended dilution: 200-1000

Gel: 6%SDS-PAGE

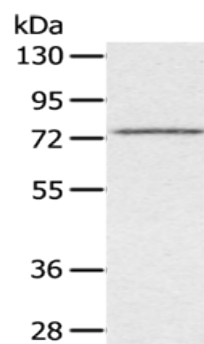
Lysate: 40 µg

Lane: Mouse brain tissue

Primary antibody: ml162227(SLC26A5 Antibody) at dilution 1/200

Secondary antibody: Goat anti rabbit IgG at 1/8000 dilution

Exposure time: 3 minutes



ELISA

Recommended dilution: 1000-2000

联系电话: 4008-898-798, 021-61725725

联系QQ: 2881505695, 2881505696

邮箱: mlbio_cn@yeah.net

网址: www.mlbio.cn