

Anti-SLC38A1 antibody

Cat. No.	ml162235
Package	25 µl/100 µl/200 µl
Storage	-20°C, pH7.4 PBS, 0.05% NaN ₃ , 40% Glycerol

Product overview

Description	Anti-SLC38A1 rabbit polyclonal antibody
Applications	ELISA, WB
Immunogen	Synthetic peptide of human SLC38A1
Reactivity	Human, Mouse, Rat
Content	0.3 mg/ml
Host species	Rabbit
Ig class	Immunogen-specific rabbit IgG
Purification	Antigen affinity purification

Target information

Symbol	SLC38A1
Full name	solute carrier family 38 member 1
Synonyms	ATA1; NAT2; SAT1; SNAT1
Swissprot	Q9H2H9

Target Background

Amino acid transporters play essential roles in the uptake of nutrients, production of energy, chemical metabolism, detoxification, and neurotransmitter cycling. SLC38A1 is an important transporter of glutamine, an intermediate in the detoxification of ammonia and the production of urea. Glutamine serves as a precursor for the synaptic transmitter, glutamate .

订购热线: 4008-898-798

Applications

Western blotting

Predicted band size: 54 kDa

Positive control: Human liver cancer tissue lysate

Recommended dilution: 200-1000

Gel: 6%SDS-PAGE

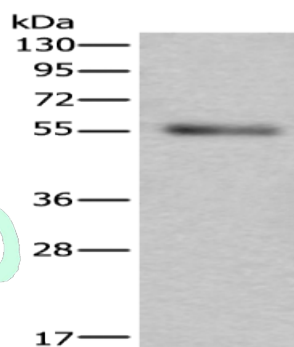
Lysate: 40 µg

Lane: Human liver cancer tissue lysate

Primary antibody: ml162235(SLC38A1 Antibody) at dilution 1/200

Secondary antibody: Goat anti rabbit IgG at 1/8000 dilution

Exposure time: 2 minutes



ELISA

Recommended dilution: 5000-10000

联系电话: 4008-898-798, 021-61725725

联系QQ: 2881505695, 2881505696

邮箱: mlbio_cn@yeah.net

网址: www.mlbio.cn