

Anti-SLC41A2 antibody

Cat. No.	ml162242
Package	25 µl/100 µl/200 µl
Storage	-20°C, pH7.4 PBS, 0.05% NaN ₃ , 40% Glycerol

Product overview

Description	Anti-SLC41A2 rabbit polyclonal antibody
Applications	ELISA, WB, IHC
Immunogen	Synthetic peptide of human SLC41A2
Reactivity	Human, Mouse
Content	0.5 mg/ml
Host species	Rabbit
Ig class	Immunogen-specific rabbit IgG
Purification	Antigen affinity purification

Target information

Symbol	SLC41A2
Full name	solute carrier family 41 (magnesium transporter), member 2
Synonyms	SLC41A1-L1
Swissprot	Q96JW4

Target Background

SLC41A2 (solute carrier family 41, member 2), also known as SLC41A1-L, is a 573 amino acid multi-pass membrane protein that belongs to the SLC41A transporter family that includes SLC41A1 and SLC41A3. Expressed in lymphocytes and localizing to the cell membrane, SLC41A2 contains twelve transmembrane domains, three myristoylation sequences, numerous possible phosphorylation sites and a putative N-glycosylation site. SLC41A2 is believed to function as a plasma-membrane magnesium transporter. Magnesium, a cofactor for ATP, plays a vital role in metabolic and biochemical processes. The transport of magnesium across membranes is essential for maintaining magnesium homeostasis and is fundamental to vertebrate metabolism.

订购热线: 4008-898-798

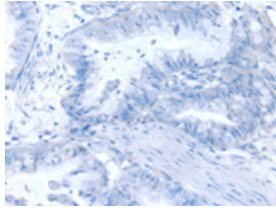
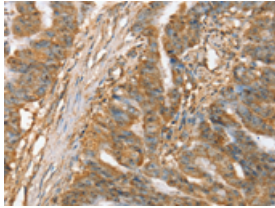
Applications

Immunohistochemistry

Predicted cell location: Cytoplasm

Positive control: Human esophagus cancer

Recommended dilution: 40-150

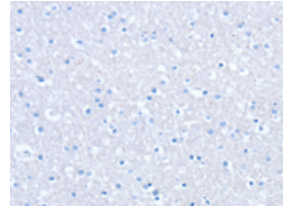
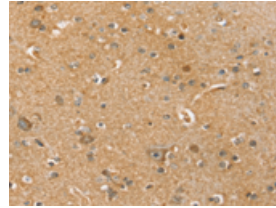


The image on the left is immunohistochemistry of paraffin-embedded Human esophagus cancer tissue using ml162242(SLC41A2 Antibody) at dilution 1/45, on the right is treated with synthetic peptide. (Original magnification: $\times 200$)

Predicted cell location: Cytoplasm

Positive control: Human brain

Recommended dilution: 40-150



The image on the left is immunohistochemistry of paraffin-embedded Human brain tissue using ml162242(SLC41A2 Antibody) at dilution 1/45, on the right is treated with synthetic peptide. (Original magnification: $\times 200$)

Western blotting

Predicted band size: 62 kDa

Positive control: Human liver cancer tissue, Human lung adenocarcinoma tissue, Human lung cancer tissue lysates

Recommended dilution: 500-2000

Gel: 8%SDS-PAGE

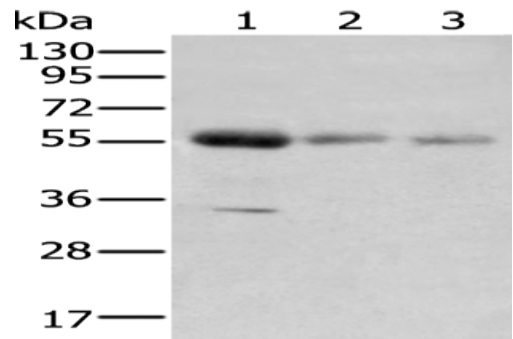
Lysate: 40 μ g

Lane 1-3: Human liver cancer tissue, Human lung adenocarcinoma tissue, Human lung cancer tissue lysates

Primary antibody: ml162242(SLC41A2 Antibody) at dilution 1/400

Secondary antibody: Goat anti rabbit IgG at 1/8000 dilution

Exposure time: 4 minutes



ELISA

Recommended dilution: 5000-10000

联系电话: 4008-898-798, 021-61725725

联系QQ: 2881505695, 2881505696

邮箱: mlbio_cn@yeah.net

网址: www.mlbio.cn