

Anti-SLC43A2 antibody

Cat. No.	ml162243
Package	25 µl/100 µl/200 µl
Storage	-20°C, pH7.4 PBS, 0.05% NaN ₃ , 40% Glycerol

Product overview

Description	Anti-SLC43A2 rabbit polyclonal antibody
Applications	ELISA, WB
Immunogen	Synthetic peptide of human SLC43A2
Reactivity	Human, Mouse
Content	0.5 mg/ml
Host species	Rabbit
Ig class	Immunogen-specific rabbit IgG
Purification	Antigen affinity purification

Target information

Symbol	SLC43A2
Full name	solute carrier family 43 (amino acid system L transporter), member 2
Synonyms	LAT4
Swissprot	Q8N370

Target Background

SLC43A2 (solute carrier family 43, member 2), also known as LAT4 or PP7664, is a 569 amino acid multi-pass membrane protein that belongs to the SLC43A solute transporter family. Expressed in a variety of tissues with highest expression in kidney and placenta, SLC43A2 functions as a sodium- and chloride-independent transport channel protein that facilitates the transport of large neutral amino acids across membranes. Overexpression of SLC43A2 is associated with head and neck carcinomas, implicating SLC43A2 as a tumor-associated protein.

订购热线: 4008-898-798

Applications

Western blotting

Predicted band size: 63 kDa

Positive control: Human normal stomach tissue

Recommended dilution: 200-1000

Gel: 8%SDS-PAGE

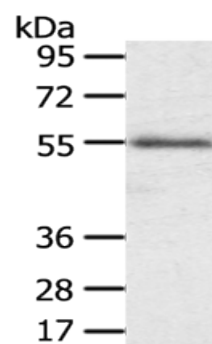
Lysate: 40 µg

Lane: Human normal stomach tissue

Primary antibody: ml162243(SLC43A2 Antibody) at dilution 1/200

Secondary antibody: Goat anti rabbit IgG at 1/8000 dilution

Exposure time: 1 minute



ELISA

Recommended dilution: 1000-2000

联系电话: 4008-898-798, 021-61725725

联系QQ: 2881505695, 2881505696

邮箱: mlbio_cn@yeah.net

网址: www.mlbio.cn