

## Anti-SLTM antibody

<b>Cat. No.</b>	ml162269
<b>Package</b>	25 µl/100 µl/200 µl
<b>Storage</b>	-20°C, pH7.4 PBS, 0.05% NaN <sub>3</sub> , 40% Glycerol

### Product overview

<b>Description</b>	Anti-SLTM rabbit polyclonal antibody
<b>Applications</b>	ELISA, WB
<b>Immunogen</b>	Synthetic peptide of human SLTM
<b>Reactivity</b>	Human, Mouse
<b>Content</b>	0.5 mg/ml
<b>Host species</b>	Rabbit
<b>Ig class</b>	Immunogen-specific rabbit IgG
<b>Purification</b>	Antigen affinity purification

### Target information

<b>Symbol</b>	SLTM
<b>Full name</b>	SAFB-like, transcription modulator
<b>Synonyms</b>	Met
<b>Swissprot</b>	Q9NWH9

### Target Background

SLTM (SAFB-like, transcription modulator), also known as MET (modulator of estrogen-induced transcription), is a 1,034 amino acid protein that localizes to punctate structures within the nucleus and contains one SAP domain and one RNA recognition motif. When expressed at high levels, SLTM functions to inhibit transcription and may, ultimately, lead to apoptosis. Multiple isoforms of SLTM exist due to alternative splicing events. The gene encoding SLTM maps to human chromosome 15, which houses over 700 genes and comprises nearly 3% of the human genome.

订购热线: 4008-898-798

#### Applications

##### Western blotting

Predicted band size: 117 kDa

Positive control: HT-29 and 293T cells

Recommended dilution: 500-2000

Gel: 6% SDS-PAGE

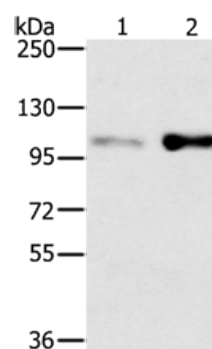
Lysate: 40 µg

Lane 1-2: HT29 cells, 293T cells

Primary antibody: ml162269 (SLTM Antibody) at dilution 1/400

Secondary antibody: Goat anti rabbit IgG at 1/8000 dilution

Exposure time: 2 minutes



##### ELISA

Recommended dilution: 2000-5000

联系电话: 4008-898-798, 021-61725725

联系QQ: 2881505695, 2881505696

邮箱: [mlbio\\_cn@yeah.net](mailto:mlbio_cn@yeah.net)

网址: [www.mlbio.cn](http://www.mlbio.cn)