

Anti-ERAL1 antibody

| | |
|-----------------|---|
| Cat. No. | ml125433 |
| Package | 25 µl/100 µl/200 µl |
| Storage | -20°C, pH7.4 PBS, 0.05% NaN ₃ , 40% Glycerol |

Product overview

| | |
|---------------------|---------------------------------------|
| Description | Anti-ERAL1 rabbit polyclonal antibody |
| Applications | ELISA, WB |
| Immunogen | Fusion protein of human ERAL1 |
| Reactivity | Human |
| Content | 1.2 mg/ml |
| Host species | Rabbit |
| Ig class | Immunogen-specific rabbit IgG |
| Purification | Antigen affinity purification |

Target information

| | |
|------------------|---|
| Symbol | ERAL1 |
| Full name | Era like 12S mitochondrial rRNA chaperone 1 |
| Synonyms | ERA; CEGA; ERA-W; H-ERA; ERAL1A; ERAL1B; HERA-A; HERA-B; PRLTS6 |
| Swissprot | O75616 |

Target Background

The protein encoded by this gene is a GTPase that localizes to the mitochondrion. The encoded protein binds to the 3' terminal stem loop of 12S mitochondrial rRNA and is required for proper assembly of the 28S small mitochondrial ribosomal subunit. Deletion of this gene has been shown to cause mitochondrial dysfunction, growth retardation, and apoptosis. Several transcript variants encoding different isoforms have been found for this gene.

订购热线: 4008-898-798

Applications

Western blotting

Predicted band size: 48 kDa

Positive control: SKOV3, Hela and HepG2 cell lysates

Recommended dilution: 500-2000

Gel: 8%SDS-PAGE

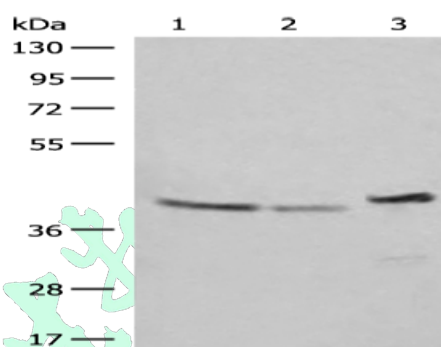
Lysate: 40 µg

Lane 1-3: SKOV3, Hela and HepG2 cell lysates

Primary antibody: ml125433(ERAL1 Antibody) at dilution 1/500

Secondary antibody: Goat anti rabbit IgG at 1/8000 dilution

Exposure time: 5 seconds



ELISA

Recommended dilution: 5000-10000

联系电话: 4008-898-798, 021-61725725

联系QQ: 2881505695, 2881505696

邮箱: mlbio_cn@yeah.net

网址: www.mlbio.cn