

## Anti-ABLIM3 antibody

<b>Cat. No.</b>	ml125451
<b>Package</b>	25 µl/100 µl/200 µl
<b>Storage</b>	-20°C, pH7.4 PBS, 0.05% NaN <sub>3</sub> , 40% Glycerol

### Product overview

<b>Description</b>	Anti-ABLIM3 rabbit polyclonal antibody
<b>Applications</b>	ELISA, WB
<b>Immunogen</b>	Fusion protein of human ABLIM3
<b>Reactivity</b>	Human, Mouse, Rat
<b>Content</b>	0.96 mg/ml
<b>Host species</b>	Rabbit
<b>Ig class</b>	Immunogen-specific rabbit IgG
<b>Purification</b>	Antigen affinity purification

### Target information

<b>Symbol</b>	ABLIM3
<b>Full name</b>	actin binding LIM protein family member 3
<b>Synonyms</b>	HMFN1661
<b>Swissprot</b>	O94929

### Target Background

This gene encodes a member of the actin-binding LIM (ablIM) family of proteins. These proteins are characterized by an N-terminal LIM domain and a C-terminal dematin-like domain. The encoded protein interacts with actin filaments and may be a component of adherens junctions in several cell types. A variant of this gene may be associated with pain sensitivity in male human patients.

订购热线: 4008-898-798

#### Applications

##### Western blotting

Predicted band size: 78 kDa

Positive control: PC3 and NIH/3T3 cell lysates

Recommended dilution: 500-2000

Gel: 8%SDS-PAGE

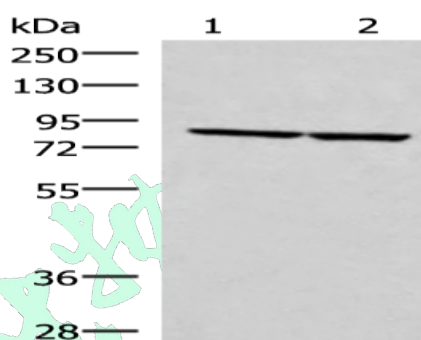
Lysate: 40 µg

Lane 1-2: PC3 and NIH/3T3 cell lysates

Primary antibody: ml125451 (ABLIM3 Antibody) at dilution 1/400

Secondary antibody: Goat anti rabbit IgG at 1/8000 dilution

Exposure time: 7 seconds



##### ELISA

Recommended dilution: 5000-10000

联系电话: 4008-898-798, 021-61725725

联系QQ: 2881505695, 2881505696

邮箱: [mlbio\\_cn@yeah.net](mailto:mlbio_cn@yeah.net)

网址: [www.mlbio.cn](http://www.mlbio.cn)