

## Anti-RABGGTA antibody

<b>Cat. No.</b>	ml125457
<b>Package</b>	25 µl/100 µl/200 µl
<b>Storage</b>	-20°C, pH7.4 PBS, 0.05% NaN <sub>3</sub> , 40% Glycerol

### Product overview

<b>Description</b>	Anti-RABGGTA rabbit polyclonal antibody
<b>Applications</b>	ELISA, WB, IHC
<b>Immunogen</b>	Fusion protein of human RABGGTA
<b>Reactivity</b>	Human, Mouse, Rat
<b>Content</b>	1.08 mg/ml
<b>Host species</b>	Rabbit
<b>Ig class</b>	Immunogen-specific rabbit IgG
<b>Purification</b>	Antigen affinity purification

### Target information

<b>Symbol</b>	RABGGTA
<b>Full name</b>	Rab geranylgeranyltransferase alpha subunit
<b>Synonyms</b>	PTAR3
<b>Swissprot</b>	Q92696

### Target Background

Catalyzes the transfer of a geranylgeranyl moiety from geranylgeranyl diphosphate to both cysteines of Rab proteins with the C-terminal sequence -XXCC, -XCXC and -CCXX, such as RAB1A, RAB3A, RAB5A and RAB7A.

订购热线: 4008-898-798

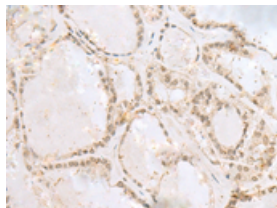
## Applications

### Immunohistochemistry

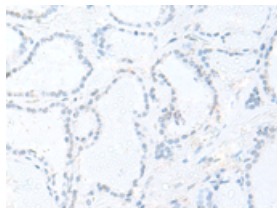
Predicted cell location: Nucleus or Cytoplasm

Positive control: Human thyroid cancer

Recommended dilution: 20-100



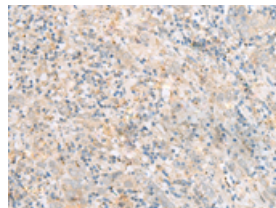
The image on the left is immunohistochemistry of paraffin-embedded Human thyroid cancer tissue using ml125457(RABGGTA Antibody) at dilution 1/60, on the right is treated with fusion protein. (Original magnification:  $\times 200$ )



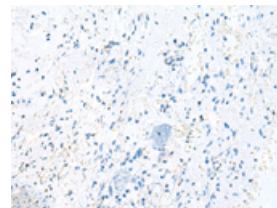
Predicted cell location: Nucleus or Cytoplasm

Positive control: Human cervical cancer

Recommended dilution: 20-100



The image on the left is immunohistochemistry of paraffin-embedded Human cervical cancer tissue using ml125457(RABGGTA Antibody) at dilution 1/60, on the right is treated with fusion protein. (Original magnification:  $\times 200$ )



### Western blotting

Predicted band size: 65 kDa

Positive control: HepG2 cell lysate

Recommended dilution: 200-1000

Gel: 8%SDS-PAGE

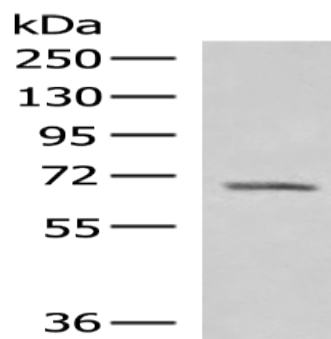
Lysate: 40  $\mu$ g

Lane: HepG2 cell lysate

Primary antibody: ml125457(RABGGTA Antibody) at dilution 1/400

Secondary antibody: Goat anti rabbit IgG at 1/8000 dilution

Exposure time: 1 minute



### ELISA

Recommended dilution: 5000-10000

联系电话: 4008-898-798, 021-61725725

联系QQ: 2881505695, 2881505696

邮箱: [mlbio\\_cn@yeah.net](mailto:mlbio_cn@yeah.net)

网址: [www.mlbio.cn](http://www.mlbio.cn)