

Anti-TRIM24 antibody

Cat. No.	ml162360
Package	25 µl/100 µl/200 µl
Storage	-20°C, pH7.4 PBS, 0.05% NaN ₃ , 40% Glycerol

Product overview

Description	Anti-TRIM24 rabbit polyclonal antibody
Applications	ELISA, WB
Immunogen	Synthetic peptide of human TRIM24
Reactivity	Human, Mouse
Content	1.5 mg/ml
Host species	Rabbit
Ig class	Immunogen-specific rabbit IgG
Purification	Antigen affinity purification

Target information

Symbol	TRIM24
Full name	tripartite motif containing 24
Synonyms	PTC6; TF1A; TIF1; RNF82; TIF1A; hTIF1; TIF1ALPHA
Swissprot	O15164

Target Background

The protein encoded by this gene mediates transcriptional control by interaction with the activation function 2 (AF2) region of several nuclear receptors, including the estrogen, retinoic acid, and vitamin D3 receptors. The protein localizes to nuclear bodies and is thought to associate with chromatin and heterochromatin-associated factors. The protein is a member of the tripartite motif (TRIM) family. The TRIM motif includes three zinc-binding domains - a RING, a B-box type 1 and a B-box type 2 - and a coiled-coil region.

订购热线: 4008-898-798

Applications

Western blotting

Predicted band size: 117/113 kDa

Positive control: 293T cell

Recommended dilution: 200-1000

Gel: 6%SDS-PAGE

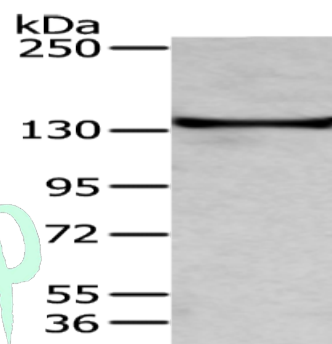
Lysate: 80 µg

Lane: 293T cell

Primary antibody: ml162360 (TRIM24 Antibody) at dilution 1/400

Secondary antibody: Goat anti rabbit IgG at 1/8000 dilution

Exposure time: 1 minute



ELISA

Recommended dilution: 1000-2000

联系电话: 4008-898-798, 021-61725725

联系QQ: 2881505695, 2881505696

邮箱: mlbio_cn@yeah.net

网址: www.mlbio.cn