

Anti-SLC26A3 antibody

Cat. No.	ml125499
Package	25 µl/100 µl/200 µl
Storage	-20°C, pH7.4 PBS, 0.05% NaN ₃ , 40% Glycerol

Product overview

Description	Anti-SLC26A3 rabbit polyclonal antibody
Applications	ELISA, WB, IHC
Immunogen	Fusion protein of human SLC26A3
Reactivity	Human, Mouse, Rat
Content	0.6 mg/ml
Host species	Rabbit
Ig class	Immunogen-specific rabbit IgG
Purification	Antigen affinity purification

Target information

Symbol	SLC26A3
Full name	solute carrier family 26 member 3
Synonyms	CLD; DRA
Swissprot	P40879

Target Background

The protein encoded by this gene is a transmembrane glycoprotein that transports chloride ions across the cell membrane in exchange for bicarbonate ions. It is localized to the mucosa of the lower intestinal tract, particularly to the apical membrane of columnar epithelium and some goblet cells. The protein is essential for intestinal chloride absorption, and mutations in this gene have been associated with congenital chloride diarrhea.

订购热线: 4008-898-798

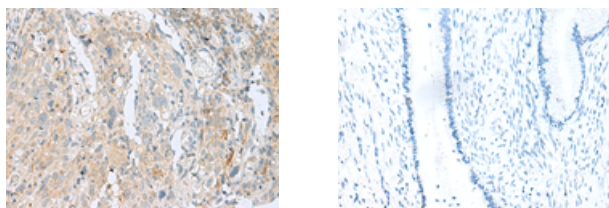
Applications

Immunohistochemistry

Predicted cell location: Cytoplasm and Cell membrane

Positive control: Human cervical cancer

Recommended dilution: 25-100



The image on the left is immunohistochemistry of paraffin-embedded Human cervical cancer tissue using ml125499(SLC26A3 Antibody) at dilution 1/35, on the right is treated with fusion protein. (Original magnification: $\times 200$)

Western blotting

Predicted band size: 85 kDa

Positive control: Human hepatocellular carcinoma tissue and HepG2 cell lysates

Recommended dilution: 500-2000

Gel: 6%SDS-PAGE

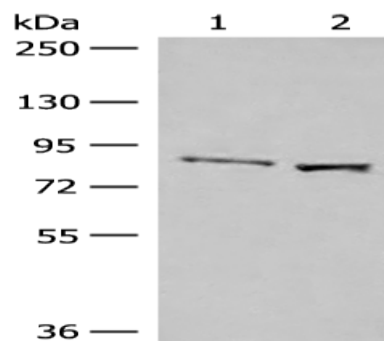
Lysate: 40 μ g

Lane 1-2: Human hepatocellular carcinoma tissue and HepG2 cell lysates

Primary antibody: ml125499(SLC26A3 Antibody) at dilution 1/250

Secondary antibody: Goat anti rabbit IgG at 1/8000 dilution

Exposure time: 10 seconds



ELISA

Recommended dilution: 5000-10000

联系电话: 4008-898-798, 021-61725725

联系QQ: 2881505695, 2881505696

邮箱: mlbio_cn@yeah.net

网址: www.mlbio.cn