

## Anti-TRIM35 antibody

|                 |   |
|-----------------|---|
| <b>Cat. No.</b> | ml162368  |
| <b>Package</b>  | 25 µl/100 µl/200 µl                                     |
| <b>Storage</b>  | -20°C, pH7.4 PBS, 0.05% NaN <sub>3</sub> , 40% Glycerol |

### Product overview

|                     |  |
|---------------------|--|
| <b>Description</b>  | Anti-TRIM35 rabbit polyclonal antibody |
| <b>Applications</b> | ELISA, WB, IHC                         |
| <b>Immunogen</b>    | Synthetic peptide of human TRIM35      |
| <b>Reactivity</b>   | Human                                  |
| <b>Content</b>      | 0.3 mg/ml                              |
| <b>Host species</b> | Rabbit                                 |
| <b>Ig class</b>     | Immunogen-specific rabbit IgG          |
| <b>Purification</b> | Antigen affinity purification          |

### Target information

|                  |                                |
|------------------|--------------------------------|
| <b>Symbol</b>    | TRIM35                         |
| <b>Full name</b> | tripartite motif containing 35 |
| <b>Synonyms</b>  | HLS5; MAIR                     |
| <b>Swissprot</b> | Q9UPQ4                         |

### Target Background

The protein encoded by this gene is a member of the tripartite motif (TRIM) family. The TRIM motif includes three zinc-binding domains, a RING, a B-box type 1 and a B-box type 2, and a coiled-coil region. The function of this protein has not been identified.

订购热线: 4008-898-798

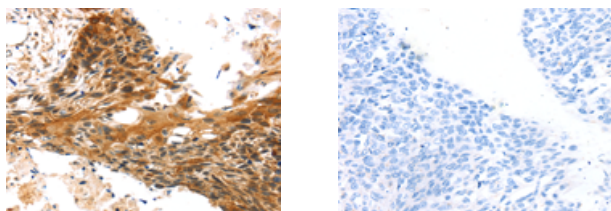
## Applications

### Immunohistochemistry

Predicted cell location: Nucleus and Cytoplasm

Positive control: Human esophagus cancer

Recommended dilution: 25-100



The image on the left is immunohistochemistry of paraffin-embedded Human esophagus cancer tissue using ml162368(TRIM35 Antibody) at dilution 1/25, on the right is treated with synthetic peptide. (Original magnification:  $\times 200$ )

### Western blotting

Predicted band size: 57 kDa

Positive control: Hela and K562 cells, human fetal muscle tissue, A375 and hepg2 cells

Recommended dilution: 500-2000

Gel: 8%SDS-PAGE

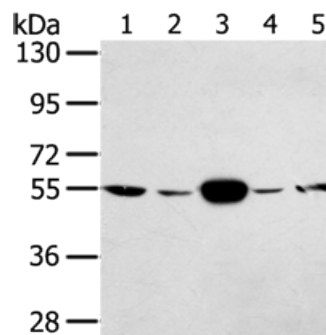
Lysate: 40  $\mu$ g

Lane 1-5: Hela cells, K562 cells, human fetal muscle tissue, A375 cells, hepg2 cells

Primary antibody: ml162368(TRIM35 Antibody) at dilution 1/400

Secondary antibody: Goat anti rabbit IgG at 1/8000 dilution

Exposure time: 20 seconds



### ELISA

Recommended dilution: 2000-5000

联系电话: 4008-898-798, 021-61725725

联系QQ: 2881505695, 2881505696

邮箱: [mlbio\\_cn@yeah.net](mailto:mlbio_cn@yeah.net)

网址: [www.mlbio.cn](http://www.mlbio.cn)