

Anti-RPP14 antibody

Cat. No.	ml125559
Package	25 µl/100 µl/200 µl
Storage	-20°C, pH7.4 PBS, 0.05% NaN ₃ , 40% Glycerol

Product overview

Description	Anti-RPP14 rabbit polyclonal antibody
Applications	ELISA, WB, IHC
Immunogen	Fusion protein of human RPP14
Reactivity	Human, Mouse
Content	1.08 mg/ml
Host species	Rabbit
Ig class	Immunogen-specific rabbit IgG
Purification	Antigen affinity purification

Target information

Symbol	RPP14
Full name	ribonuclease P/MRP subunit p14
Synonyms	P14
Swissprot	O95059

Target Background

This gene encodes a subunit of ribonuclease P and has 3' to 5' exoribonuclease activity. Transcripts for this gene are bicistronic and include a conserved downstream open reading frame for the hydroxyacyl-thioester dehydratase type 2 (HTD2) gene.

订购热线: 4008-898-798

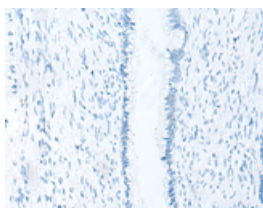
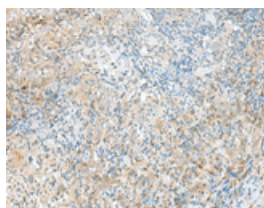
Applications

Immunohistochemistry

Predicted cell location: Cytoplasm or Nucleus

Positive control: Human cervical cancer

Recommended dilution: 50-300

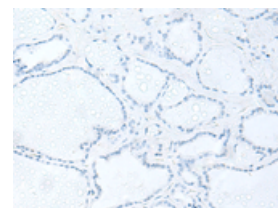
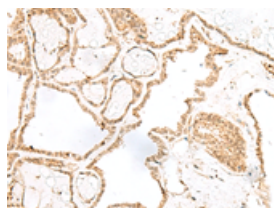


The image on the left is immunohistochemistry of paraffin-embedded Human cervical cancer tissue using ml125559(RPP14 Antibody) at dilution 1/60, on the right is treated with fusion protein. (Original magnification: $\times 200$)

Predicted cell location: Cytoplasm or Nucleus

Positive control: Human thyroid cancer

Recommended dilution: 50-300



The image on the left is immunohistochemistry of paraffin-embedded Human thyroid cancer tissue using ml125559(RPP14 Antibody) at dilution 1/60, on the right is treated with fusion protein. (Original magnification: $\times 200$)

Western blotting

Predicted band size: 14 kDa

Positive control: HL60, Hela, 231 cell, Human breast cancer tissue lysates

Recommended dilution: 500-2000

Gel: 12%SDS-PAGE

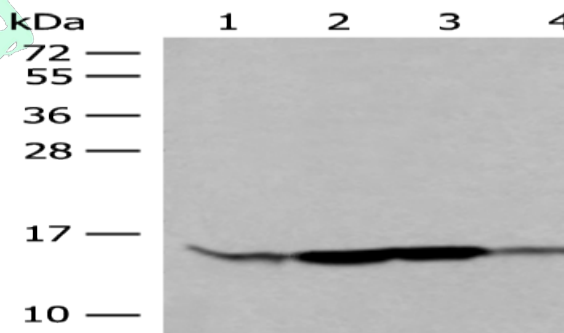
Lysate: 40 μ g

Lane 1-4: HL60, Hela, 231 cell, Human breast cancer tissue lysates

Primary antibody: ml125559(RPP14 Antibody) at dilution 1/400

Secondary antibody: Goat anti rabbit IgG at 1/8000 dilution

Exposure time: 30 seconds



ELISA

Recommended dilution: 5000-10000

联系电话: 4008-898-798, 021-61725725

联系QQ: 2881505695, 2881505696

邮箱: mlbio_cn@yeah.net

网址: www.mlbio.cn