

## Anti-LMO3 antibody

<b>Cat. No.</b>	ml125576
<b>Package</b>	25 µl/100 µl/200 µl
<b>Storage</b>	-20°C, pH7.4 PBS, 0.05% NaN <sub>3</sub> , 40% Glycerol

### Product overview

<b>Description</b>	Anti-LMO3 rabbit polyclonal antibody
<b>Applications</b>	ELISA, WB, IHC
<b>Immunogen</b>	Fusion protein of human LMO3
<b>Reactivity</b>	Human, Mouse, Rat
<b>Content</b>	1.08 mg/ml
<b>Host species</b>	Rabbit
<b>Ig class</b>	Immunogen-specific rabbit IgG
<b>Purification</b>	Antigen affinity purification

### Target information

<b>Symbol</b>	LMO3
<b>Full name</b>	LIM domain only 3
<b>Synonyms</b>	RBTN3; RHOM3; RBTN2; Rhom-3
<b>Swissprot</b>	Q8TAP4

### Target Background

The protein encoded by this gene belongs to the rhombotin family of cysteine-rich LIM domain oncogenes. This gene is predominantly expressed in the brain. Related family members, LMO1 and LMO2 on chromosome 11, have been reported to be involved in chromosomal translocations in T-cell leukemia. Many alternatively spliced transcript variants have been found for this gene.

订购热线: 4008-898-798

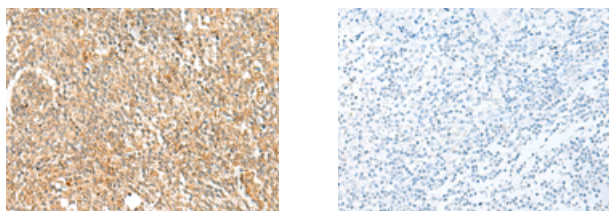
#### Applications

##### Immunohistochemistry

Predicted cell location: Cytoplasm

Positive control: Human tonsil

Recommended dilution: 50-300



The image on the left is immunohistochemistry of paraffin-embedded Human tonsil tissue using ml125576(LMO3 Antibody) at dilution 1/60, on the right is treated with fusion protein. (Original magnification:  $\times 200$ )

##### Western blotting

Predicted band size: 17 kDa

Positive control: Human cerebella tissue, Rat heart tissue, Human heart tissue lysates

Recommended dilution: 200-1000

Gel: 12%SDS-PAGE

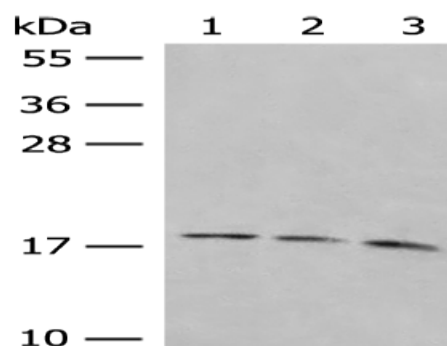
Lysate: 40  $\mu$ g

Lane 1-3: Human cerebella tissue, Rat heart tissue, Human heart tissue lysates

Primary antibody: ml125576(LMO3 Antibody) at dilution 1/450

Secondary antibody: Goat anti rabbit IgG at 1/8000 dilution

Exposure time: 10 minutes



##### ELISA

Recommended dilution: 5000-10000

联系电话: 4008-898-798, 021-61725725

联系QQ: 2881505695, 2881505696

邮箱: [mlbio\\_cn@yeah.net](mailto:mlbio_cn@yeah.net)

网址: [www.mlbio.cn](http://www.mlbio.cn)