

Anti-HBE1 antibody

Cat. No.	ml125581
Package	25 µl/100 µl/200 µl
Storage	-20°C, pH7.4 PBS, 0.05% NaN ₃ , 40% Glycerol

Product overview

Description	Anti-HBE1 rabbit polyclonal antibody
Applications	ELISA, WB
Immunogen	Fusion protein of human HBE1
Reactivity	Human, Mouse
Content	0.48 mg/ml
Host species	Rabbit
Ig class	Immunogen-specific rabbit IgG
Purification	Antigen affinity purification

Target information

Symbol	HBE1
Full name	hemoglobin subunit epsilon 1
Synonyms	HBE
Swissprot	P02100

Target Background

The epsilon globin gene (HBE) is normally expressed in the embryonic yolk sac: two epsilon chains together with two zeta chains (an alpha-like globin) constitute the embryonic hemoglobin Hb Gower I; two epsilon chains together with two alpha chains form the embryonic Hb Gower II. Both of these embryonic hemoglobins are normally supplanted by fetal, and later, adult hemoglobin. The five beta-like globin genes are found within a 45 kb cluster on chromosome 11 in the following order: 5'-epsilon - G-gamma - A-gamma - delta - beta-3'.

订购热线: 4008-898-798

Applications

Western blotting

Predicted band size: 16 kDa

Positive control: Human plasma solution, Human placenta tissue, Human gastric tissue and Mouse liver tissue lysates

Recommended dilution: 500-2000

Gel: 12%SDS-PAGE

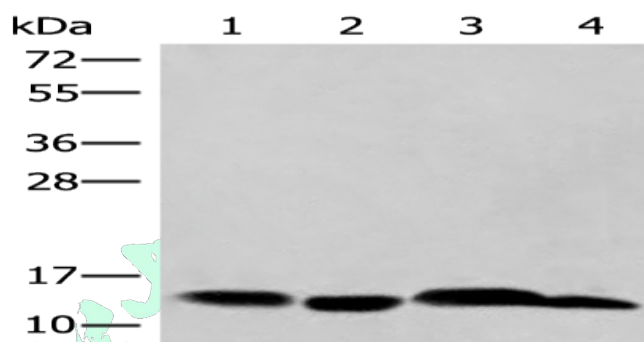
Lysate: 40 μ g

Lane 1-4: Human plasma solution, Human placenta tissue, Human gastric tissue and Mouse liver tissue lysates

Primary antibody: ml125581(HBE1 Antibody) at dilution 1/200

Secondary antibody: Goat anti rabbit IgG at 1/8000 dilution

Exposure time: 20 seconds



ELISA

Recommended dilution: 5000-10000

联系电话: 4008-898-798, 021-61725725

联系QQ: 2881505695, 2881505696

邮箱: mlbio_cn@yeah.net

网址: www.mlbio.cn

mlbio 酶联生物
Good elisakit producers
订购热线: 4008-898-798