

## Anti-IL36RN antibody

<b>Cat. No.</b>	ml125593
<b>Package</b>	25 µl/100 µl/200 µl
<b>Storage</b>	-20°C, pH7.4 PBS, 0.05% NaN <sub>3</sub> , 40% Glycerol

### Product overview

<b>Description</b>	Anti-IL36RN rabbit polyclonal antibody
<b>Applications</b>	ELISA, WB
<b>Immunogen</b>	Fusion protein of human IL36RN
<b>Reactivity</b>	Human, Mouse, Rat
<b>Content</b>	0.48 mg/ml
<b>Host species</b>	Rabbit
<b>Ig class</b>	Immunogen-specific rabbit IgG
<b>Purification</b>	Antigen affinity purification

### Target information

<b>Symbol</b>	IL36RN
<b>Full name</b>	interleukin 36 receptor antagonist
<b>Synonyms</b>	FIL1; FIL1D; IL1F5; IL1L1; PSORP; IL1HY1; IL1RP3; IL36RA; IL-36Ra; PSORS14; FIL1(Delta)
<b>Swissprot</b>	Q9UBH0

### Target Background

The protein encoded by this gene is a member of the interleukin 1 cytokine family. This cytokine was shown to specifically inhibit the activation of NF-kappaB induced by interleukin 1 family, member 6 (IL1F6). This gene and eight other interleukin 1 family genes form a cytokine gene cluster on chromosome 2. Two alternatively spliced transcript variants encoding the same protein have been reported.

订购热线: 4008-898-798

#### Applications

##### Western blotting

Predicted band size: 17 kDa

Positive control: Rat heart tissue lysate

Recommended dilution: 200-1000

Gel: 12%SDS-PAGE

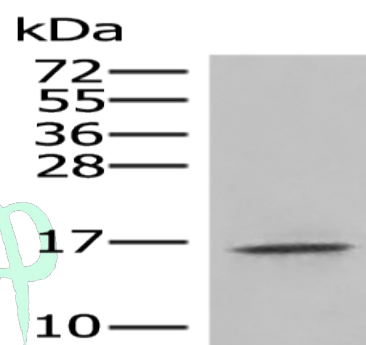
Lysate: 40 µg

Lane: Rat heart tissue lysate

Primary antibody: ml125593(IL36RN Antibody) at dilution 1/200

Secondary antibody: Goat anti rabbit IgG at 1/8000 dilution

Exposure time: 3 minutes



#### ELISA

Recommended dilution: 5000-10000

联系电话: 4008-898-798, 021-61725725

联系QQ: 2881505695, 2881505696

邮箱: [mlbio\\_cn@yeah.net](mailto:mlbio_cn@yeah.net)

网址: [www.mlbio.cn](http://www.mlbio.cn)