

Anti-TM7SF2 antibody

Cat. No.	ml162376
Package	25 µl/100 µl/200 µl
Storage	-20°C, pH7.4 PBS, 0.05% NaN ₃ , 40% Glycerol

Product overview

Description	Anti-TM7SF2 rabbit polyclonal antibody
Applications	ELISA, WB, IHC
Immunogen	Synthetic peptide of human TM7SF2
Reactivity	Human, Mouse
Content	0.4 mg/ml
Host species	Rabbit
Ig class	Immunogen-specific rabbit IgG
Purification	Antigen affinity purification

Target information

Symbol	TM7SF2
Full name	transmembrane 7 superfamily member 2
Synonyms	ANG1; NET47; DHCR14A
Swissprot	O76062

Target Background

Transmembrane 7 superfamily member 2 (TM7SF2, Sterol C14-reductase, 3beta-hydroxysterol Delta-reductase) is a 418 amino acid gene product that belongs to the ERG4/ERG24 family. TM7SF2 is a seven pass transmembrane protein that can localize to the membrane of the endoplasmic reticulum. TM7SF2 is involved in the conversion of lanosterol to cholesterol and, specifically, catalyzes the NADPH dependant reduction of 4,4-dimethyl-5-alpha-cholesta-8,14,24-trien-3-beta-ol to 4,4-dimethyl-5-alpha-cholesta-8,24-dien-3-beta-ol and NADP⁺.

订购热线: 4008-898-798

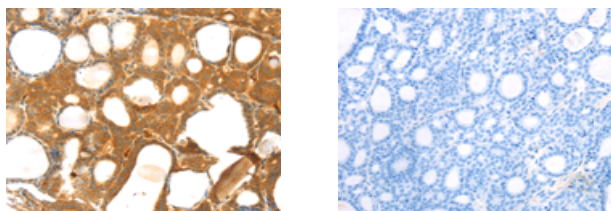
Applications

Immunohistochemistry

Predicted cell location: Cytoplasm

Positive control: Human thyroid cancer

Recommended dilution: 25-100



The image on the left is immunohistochemistry of paraffin-embedded Human thyroid cancer tissue using ml162376(TM7SF2 Antibody) at dilution 1/25, on the right is treated with synthetic peptide. (Original magnification: $\times 200$)

Western blotting

Predicted band size: 46 kDa

Positive control: Mouse liver tissue

Recommended dilution: 500-2000

Gel: 8%SDS-PAGE

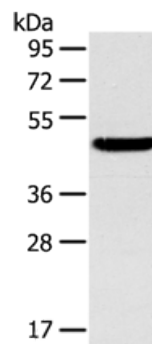
Lysate: 40 μ g

Lane: Mouse liver tissue

Primary antibody: ml162376(TM7SF2 Antibody) at dilution 1/400

Secondary antibody: Goat anti rabbit IgG at 1/8000 dilution

Exposure time: 1 minute



ELISA

Recommended dilution: 2000-5000

联系电话: 4008-898-798, 021-61725725

联系QQ: 2881505695, 2881505696

邮箱: mlbio_cn@yeah.net

网址: www.mlbio.cn