

Anti-TMPRSS11F antibody

| | |
|-----------------|---|
| Cat. No. | ml162381 |
| Package | 25 µl/100 µl/200 µl |
| Storage | -20°C, pH7.4 PBS, 0.05% NaN ₃ , 40% Glycerol |

Product overview

| | |
|---------------------|---|
| Description | Anti-TMPRSS11F rabbit polyclonal antibody |
| Applications | ELISA, WB, IHC |
| Immunogen | Synthetic peptide of human TMPRSS11F |
| Reactivity | Human, Mouse |
| Content | 0.7 mg/ml |
| Host species | Rabbit |
| Ig class | Immunogen-specific rabbit IgG |
| Purification | Antigen affinity purification |

Target information

| | |
|------------------|------------------------------------|
| Symbol | TMPRSS11F |
| Full name | transmembrane protease, serine 11F |
| Synonyms | |
| Swissprot | Q6ZWK6 |

Target Background

TMPRSS11F is a type-II transmembrane protease, similar to hepsin (TMPRSS1). TMPRSS11F is a member of a larger family of membrane attached serine proteases, a poorly defined group that includes TMPRSS11A, B, C, D, E, F, Hepsin, Corin, Matriptase-1, 2 and 3. TMPRSS11F has a domain structure of an aminoterminal cytoplasmic domain, followed by a transmembrane domain, a SEA domain (Sea urchin sperm protein, Enterokinase, Agrin), a short spacer, then the trypsin-like serine protease domain. The SEA domain is thought to play a role in carbohydrate binding in the analogous protein sequences where it is found, but its role in TMPRSS11F is unclear. The cleavage of the Arg206-Ile207 bond is thought to liberate the catalytic domain.

订购热线: 4008-898-798

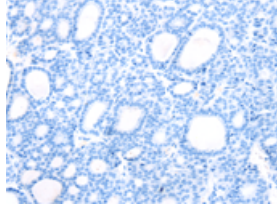
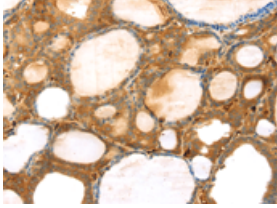
Applications

Immunohistochemistry

Predicted cell location: Cytoplasm

Positive control: Human thyroid cancer

Recommended dilution: 25-100

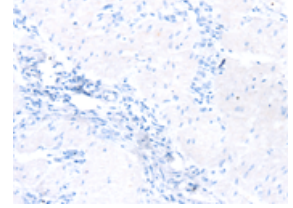
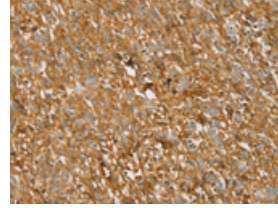


The image on the left is immunohistochemistry of paraffin-embedded Human thyroid cancer tissue using ml162381(TMPRSS11F Antibody) at dilution 1/30, on the right is treated with synthetic peptide. (Original magnification: ×200)

Predicted cell location: Cytoplasm

Positive control: Human gastric cancer

Recommended dilution: 25-100



The image on the left is immunohistochemistry of paraffin-embedded Human gastric cancer tissue using ml162381(TMPRSS11F Antibody) at dilution 1/30, on the right is treated with synthetic peptide. (Original magnification: ×200)

Western blotting

Predicted band size: 49 kDa

Positive control: Human thyroid and esophagus cancer, human normal rectum tissue

Recommended dilution: 500-2000

Gel: 8%SDS-PAGE

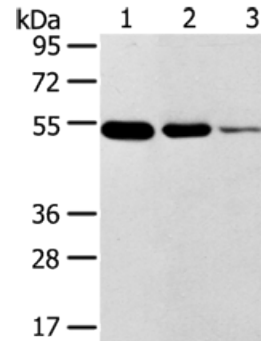
Lysate: 40 µg

Lane 1-3: Human thyroid tissue, Human esophagus cancer tissue, human normal rectum tissue

Primary antibody: ml162381(TMPRSS11F Antibody) at dilution 1/500

Secondary antibody: Goat anti rabbit IgG at 1/8000 dilution

Exposure time: 1 minute



ELISA

Recommended dilution: 2000-5000

联系电话: 4008-898-798, 021-61725725

联系QQ: 2881505695, 2881505696

邮箱: mlbio_cn@yeah.net

网址: www.mlbio.cn