

Anti-TPD52 antibody

Cat. No.	ml162397
Package	25 µl/100 µl/200 µl
Storage	-20°C, pH7.4 PBS, 0.05% NaN ₃ , 40% Glycerol

Product overview

Description	Anti-TPD52 rabbit polyclonal antibody
Applications	ELISA, WB
Immunogen	Synthetic peptide of human TPD52
Reactivity	Human
Content	0.8 mg/ml
Host species	Rabbit
Ig class	Immunogen-specific rabbit IgG
Purification	Antigen affinity purification

Target information

Symbol	TPD52
Full name	tumor protein D52
Synonyms	D52; N8L; PC-1; PrLZ; hD52
Swissprot	P55327

Target Background

The tumor protein D52 (TPD52) family consists of three members, TPD52, TPD52L1 (D53), and TPD52L2 (D54). These small coiled-coil motif bearing proteins interact in hetero- and homomeric fashion. The TPD52 gene maps to chromosome 8q21, and due to amplification, shows frequent overexpression in prostate and breast carcinomas. TPD52 bound to annexin VI in a Ca(2+)-dependent manner, suggesting that these molecules may act in concert to regulate secretory processes in plasma cells.

订购热线: 4008-898-798

Applications

Western blotting

Predicted band size: 24 kDa

Positive control: Raji, 231, 293T and A549 cells

Recommended dilution: 500-2000

Gel: 12% SDS-PAGE

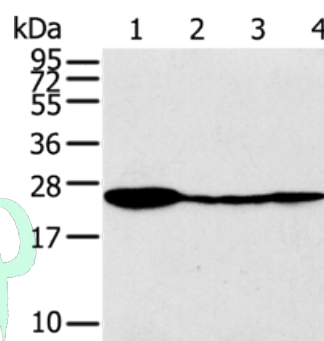
Lysate: 40 µg

Lane 1-4: Raji cells, 231 cells, 293T cells, A549 cells

Primary antibody: ml162397 (TPD52 Antibody) at dilution 1/320

Secondary antibody: Goat anti rabbit IgG at 1/8000 dilution

Exposure time: 5 seconds



ELISA

Recommended dilution: 2000-5000

联系电话: 4008-898-798, 021-61725725

联系QQ: 2881505695, 2881505696

邮箱: mlbio_cn@yeah.net

网址: www.mlbio.cn